
INTRODUCTION

City staff assembled a series of maps derived from Geographic Information System technology (GIS) data for each historic district. This appears here as a series of maps for each of the historic districts to help understand the degree of consistency or diversity that exists as well as other patterns of development.

For each of the historic districts, five maps were developed from GIS data and are included in this appendix:

- Building Age
- Building Size
- Lot Coverage
- Lot Size
- Floor Area Ratio

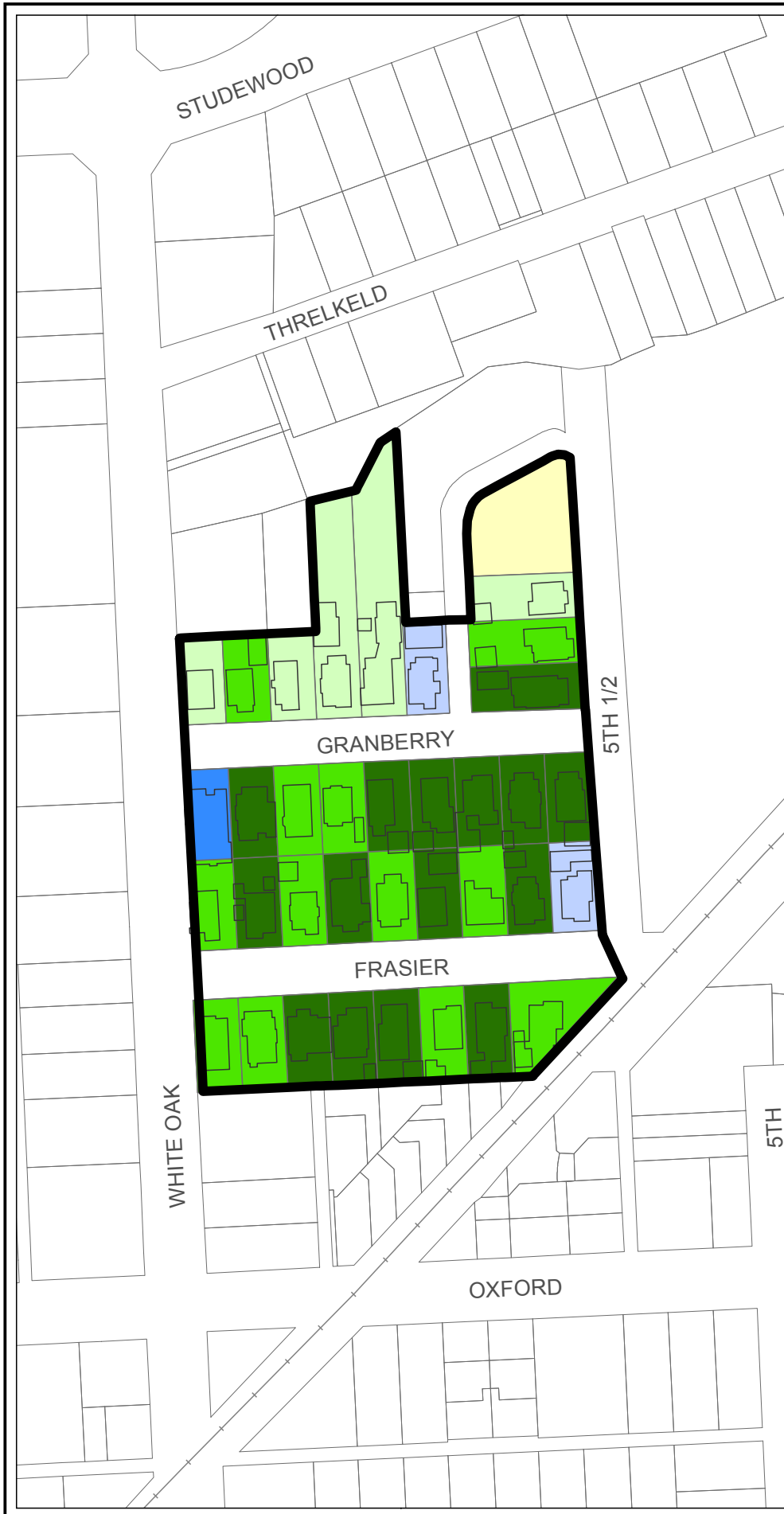
A map showing those structures that are contributing and noncontributing also was generated for each district. In some districts, historic Sanborn fire insurance maps were also available and are included in this appendix.

This series of data maps helps to document historical and current development patterns. This informed the recommendations for design standards that appear in Appendix B.

FREELAND HISTORIC DISTRICT







This map is made available for reference purposes only and should not be substituted for a survey product. The City of Houston will not accept liability of any kind in conjunction with its use.



PLANNING & DEVELOPMENT DEPARTMENT

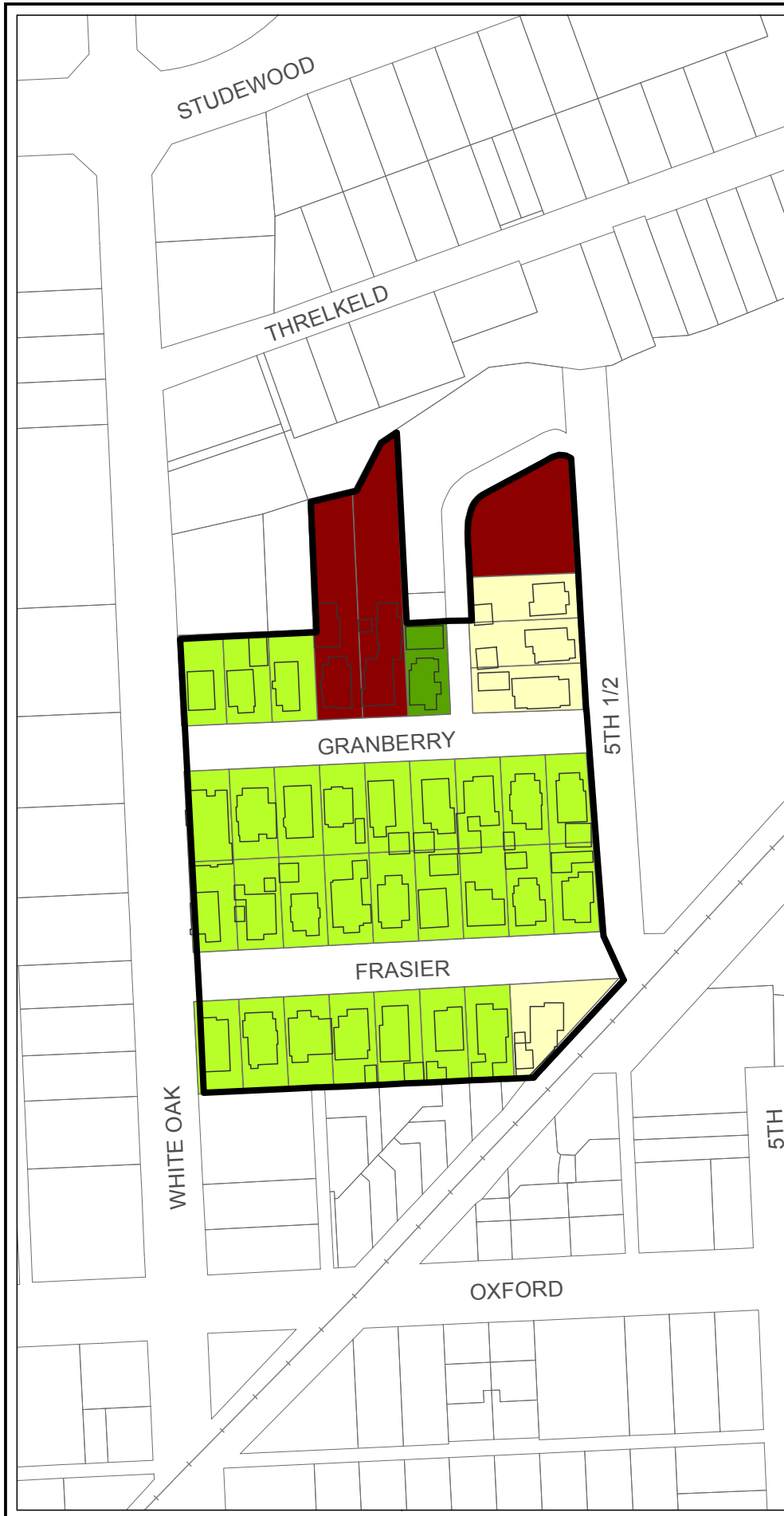
**City of Houston Historic Districts
Freeland Lot Coverage**



Source: GIS Services Division,
Vendor Building Footprints, 2015
Date: June 2016
Reference: p1.18958

Lot Coverage	Count
Less than 5%	(1)
5% - 9%	(0)
10% - 19%	(0)
20% - 29%	(5)
30% - 39%	(12)
40% - 49%	(15)
50% - 59%	(2)
60% - 69%	(1)
70% - 100%	(0)

- Parcels
- Building Footprints
- Freeland
- Railroad

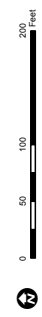


This map is made available for reference purposes only and should not be substituted for a survey product. The City of Houston will not accept liability of any kind in conjunction with its use.



PLANNING & DEVELOPMENT DEPARTMENT

**City of Houston Historic Districts
Freeland Lot Size**



Source: GIS Services Division, Vendor Building Footprints, 2015
Date: August 2016
Reference: PJ 19113

- Parcels
 - Building Footprints
 - Freeland
 - Railroad
- Lot Size (Square Feet)**
- 4000 - 4999 (1)
 - 5000 - 5999 (28)
 - 6000 - 6999 (4)
 - > 10,000 (3)



This map is made available for reference purposes only and should not be substituted for a survey product. The City of Houston will not accept liability of any kind in conjunction with its use.



PLANNING & DEVELOPMENT DEPARTMENT

**City of Houston Historic Districts
Freeland FAR**



Source: GIS Services Division,
Vendor: Building Footprints 2015
Date: September 2016
Reference: pl19182

Parcel	Building Footprints	Freeland	Railroad
[White outline]	[Black outline]	[Black outline]	[Dashed line]

FAR (Floor to Area Ratio)	Count
0.15 - 0.19	(6)
0.20 - 0.24	(13)
0.25 - 0.29	(10)
0.30 - 0.34	(1)
0.35 - 0.39	(1)
0.40 - 0.44	(2)
N/A	

Freeland Historic District

Historic District Boundary
- - - - -

Building Classification
 Contributing
 Non-Contributing

Established: September 10, 2008
 Source: GIS Services Division
 Date: May 1, 2013
 Reference: pj17025_Freeland



This map is made available for reference purposes only and should not be substituted for a survey product. The City of Houston will not accept liability of any kind in conjunction with its use.



**PLANNING &
DEVELOPMENT
DEPARTMENT**



SCALE 100 FT TO AN INCH



271

267

223

270

HOUSTON HEIGHTS EAST HISTORIC DISTRICT





[Outline] Parcels
 [Thick Outline] Building Footprints
 [Thin Outline] Houston Heights East

Building Size (Square Feet)

■ < 500 (1)	■ 2000 - 2499 (106)
■ 500 - 999 (65)	■ 2500 - 2999 (93)
■ 1000 - 1499 (237)	■ 3000 - 3499 (72)
■ 1500 - 1999 (180)	■ > 3500 (128)
■ N/A (29)	

City of Houston Historic Districts
Houston Heights East Building Size

0 150 300 600
 Feet

Source: GIS Services Division,
 Vender Building Footprints 2015
 Date: August 2016
 Reference: pj191114

This map is made available for reference purposes only and should not be substituted for a survey product. The City of Houston will not accept liability of any kind in conjunction with its use.





[Outline] Parcels
 [Thick Outline] Building Footprints
 [Thick Outline] Houston Heights East

Lot Coverage

Less than 5% (11)	40% - 49% (285)
5% - 9% (0)	50% - 59% (146)
10% - 19% (11)	60% - 69% (64)
20% - 29% (101)	70% - 100% (33)
30% - 39% (257)	N/A (3)

City of Houston Historic Districts
Houston Heights East Lot Coverage

0 150 300 600 Feet
 Source: GIS Services Division,
 Vender Building Footprints 2015
 Date: June 2016
 Reference: p18988

This map is made available for reference purposes only and should not be substituted for a survey product. The City of Houston will not accept liability of any kind in conjunction with its use.



**PLANNING &
 DEVELOPMENT
 DEPARTMENT**



- Parcels
- Building Footprints
- Houston Heights East

Lot Size (Square Feet)

< 4000 (162)	7000 - 7999 (80)
4000 - 4999 (37)	8000 - 8999 (17)
5000 - 5999 (33)	9000 - 9999 (33)
6000 - 6999 (479)	> 10,000 (70)

City of Houston Historic Districts
Houston Heights East Lot Size

Source: GIS Services Division,
 Vender Building Footprints 2015
 Date: August 2016
 Reference: p19113

This map is made available for reference purposes only and should not be substituted for a survey product. The City of Houston will not accept liability of any kind in conjunction with its use.



**PLANNING &
 DEVELOPMENT
 DEPARTMENT**

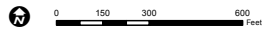


☐ Parcels
 ☐ Building Footprints
 ☐ Houston Heights East

FAR (Floor to Area Ratio)

0.15 - 0.19 (108)	0.35 - 0.39 (71)
0.20 - 0.24 (151)	0.40 - 0.44 (43)
0.25 - 0.29 (107)	0.45 - 0.49 (44)
0.30 - 0.34 (64)	0.50 - 0.54 (34)
	N/A

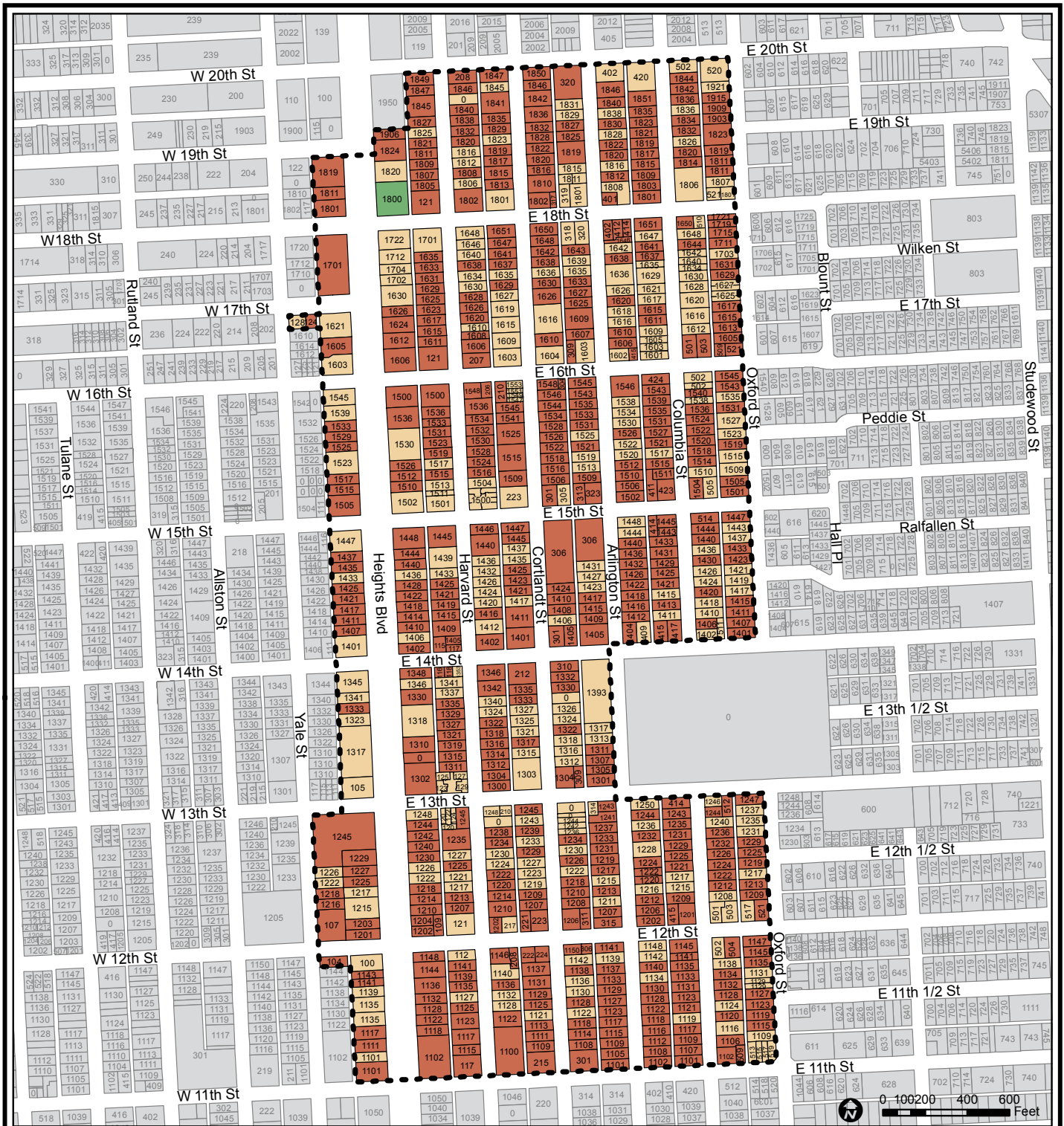
City of Houston Historic Districts
Houston Heights East FAR



Source: GIS Services Division,
 Vender Building Footprints 2015
 Date: September 2016
 Reference: pj19182

This map is made available for reference purposes only and should not be substituted for a survey product. The City of Houston will not accept liability of any kind in conjunction with its use.





Houston Heights East Historic District

Historic District Boundary
 - - - -

Building Classification

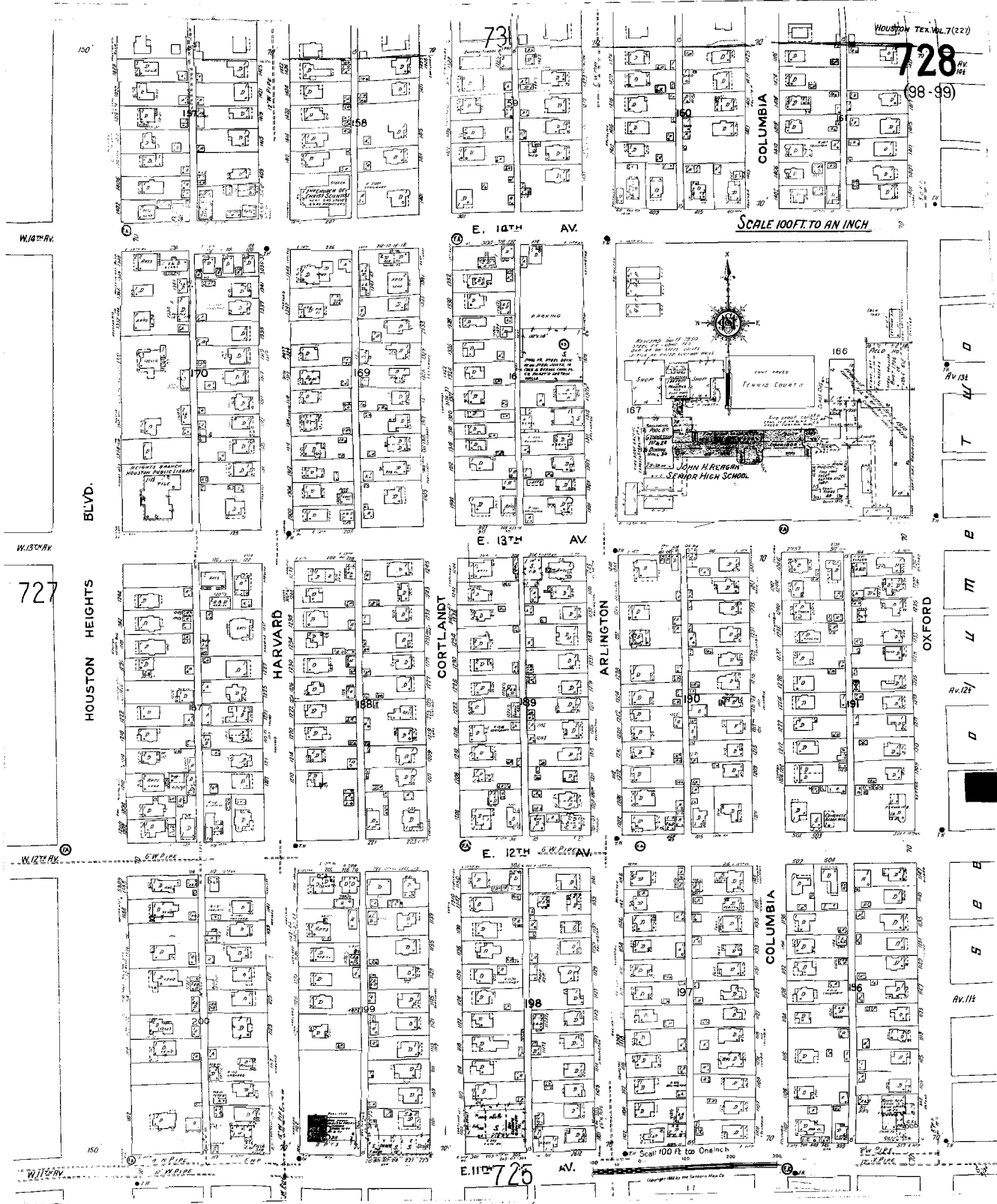
- Contributing
- Non-Contributing
- Park

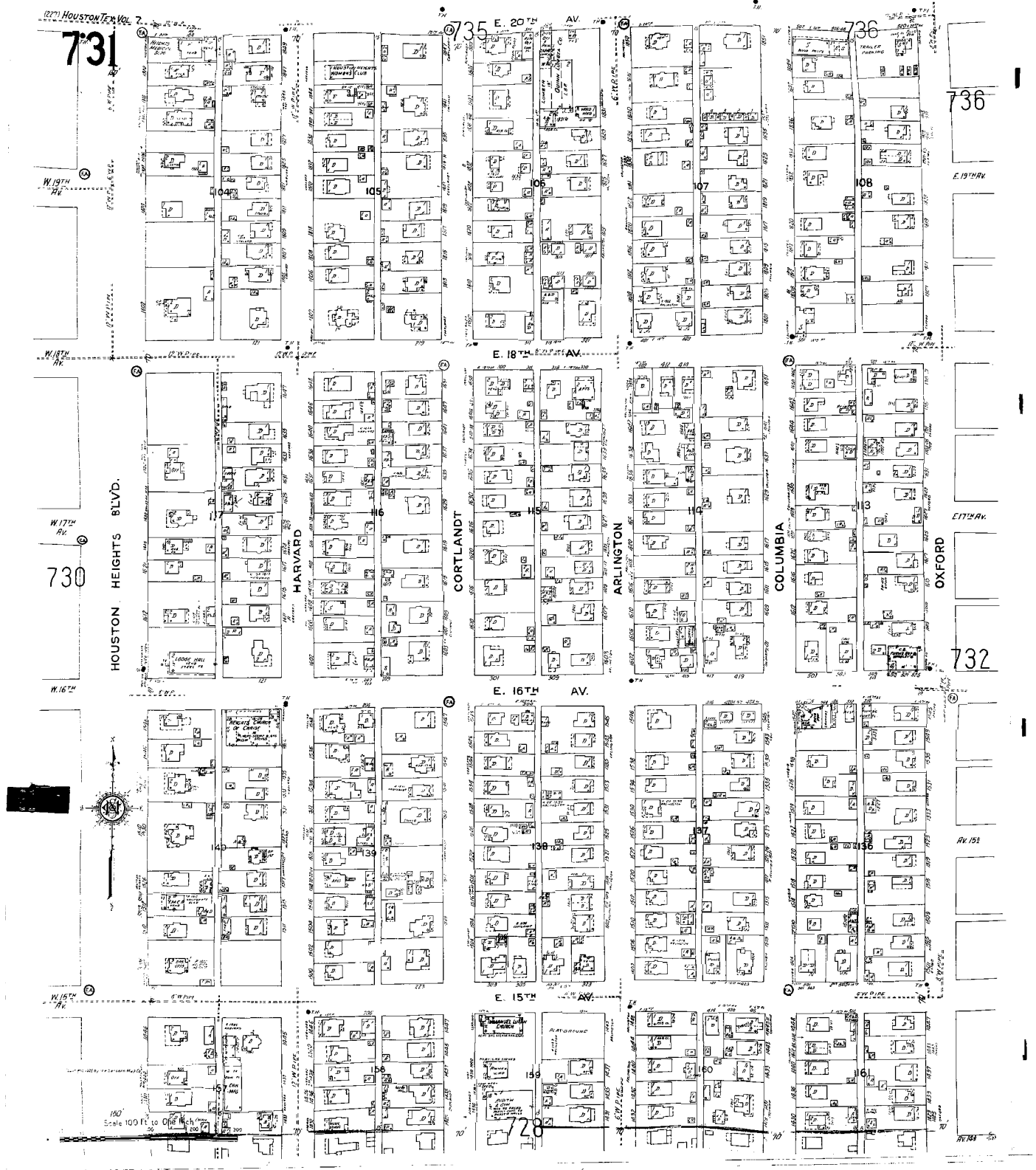
Established: February 20, 2008
 Source: GIS Services Division
 Date: May 1, 2013
 Reference: pj17025_Heights_East

This map is made available for reference purposes only and should not be substituted for a survey product. The City of Houston will not accept liability of any kind in conjunction with its use.



PLANNING & DEVELOPMENT DEPARTMENT





HOUSTON HEIGHTS SOUTH HISTORIC DISTRICT





- Parcels
- Building Footprints
- Houston Heights South

Building Size (Square Feet)

500 - 999 (41)	2500 - 2999 (89)
1000 - 1499 (193)	3000 - 3499 (81)
1500 - 1999 (145)	> 3500 (108)
2000 - 2499 (91)	N/A (43)

City of Houston Historic Districts
Houston Heights South Building Size



Source: GIS Services Division,
 Vender Building Footprints 2015
 Date: August 2016
 Reference: p19114

This map is made available for reference purposes only and should not be substituted for a survey product. The City of Houston will not accept liability of any kind in conjunction with its use.



**PLANNING &
 DEVELOPMENT
 DEPARTMENT**



	Parcels
	Building Footprints
	Houston Heights South
Lot Coverage	
	Less than 5% (12)
	5% - 9% (2)
	10% - 19% (16)
	20% - 29% (79)
	30% - 39% (186)
	40% - 49% (242)
	50% - 59% (133)
	60% - 69% (76)
	70% - 100% (37)
	N/A (6)

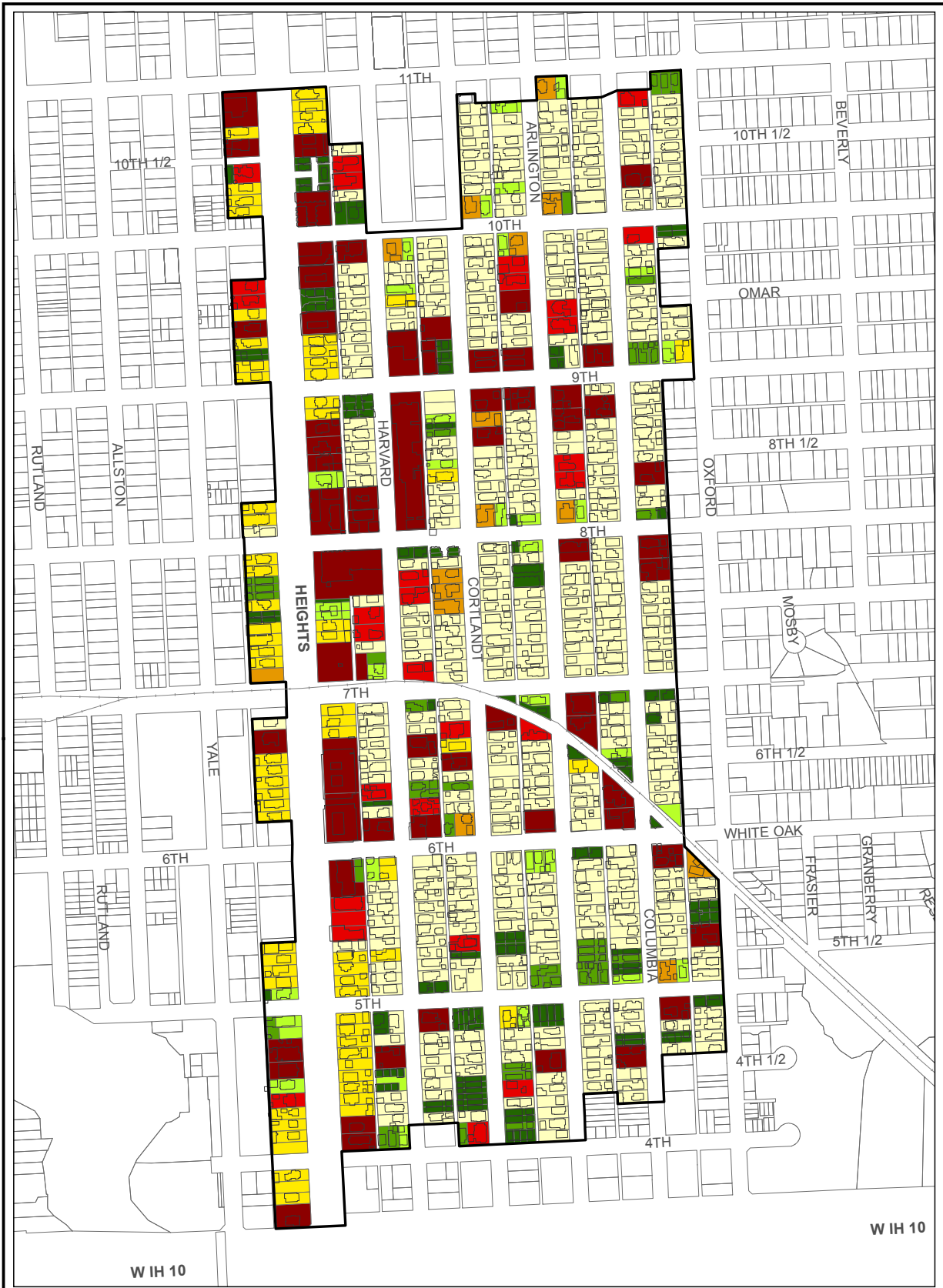
City of Houston Historic Districts
Houston Heights South Lot Coverage

Source: GIS Services Division,
 Vender Building Footprints 2015
 Date: June 2016
 Reference: pj18988

This map is made available for reference purposes only and should not be substituted for a survey product. The City of Houston will not accept liability of any kind in conjunction with its use.



**PLANNING &
 DEVELOPMENT
 DEPARTMENT**



- Parcels
- Building Footprints
- Houston Heights South

Lot Size (Square Feet)	
	< 4000 (132)
	7000 - 7999 (70)
	4000 - 4999 (38)
	8000 - 8999 (15)
	5000 - 5999 (35)
	9000 - 9999 (29)
	6000 - 6999 (411)
	> 10,000 (59)

City of Houston Historic Districts Houston Heights South Lot Size



Source: GIS Services Division,
Vender Building Footprints 2015
Date: August 2016
Reference: p19113

This map is made available for reference purposes only and should not be substituted for a survey product. The City of Houston will not accept liability of any kind in conjunction with its use.



**PLANNING &
DEVELOPMENT
DEPARTMENT**



[] Parcels
 [] Building Footprints
 [] Houston Heights South

FAR (Floor to Area Ratio)

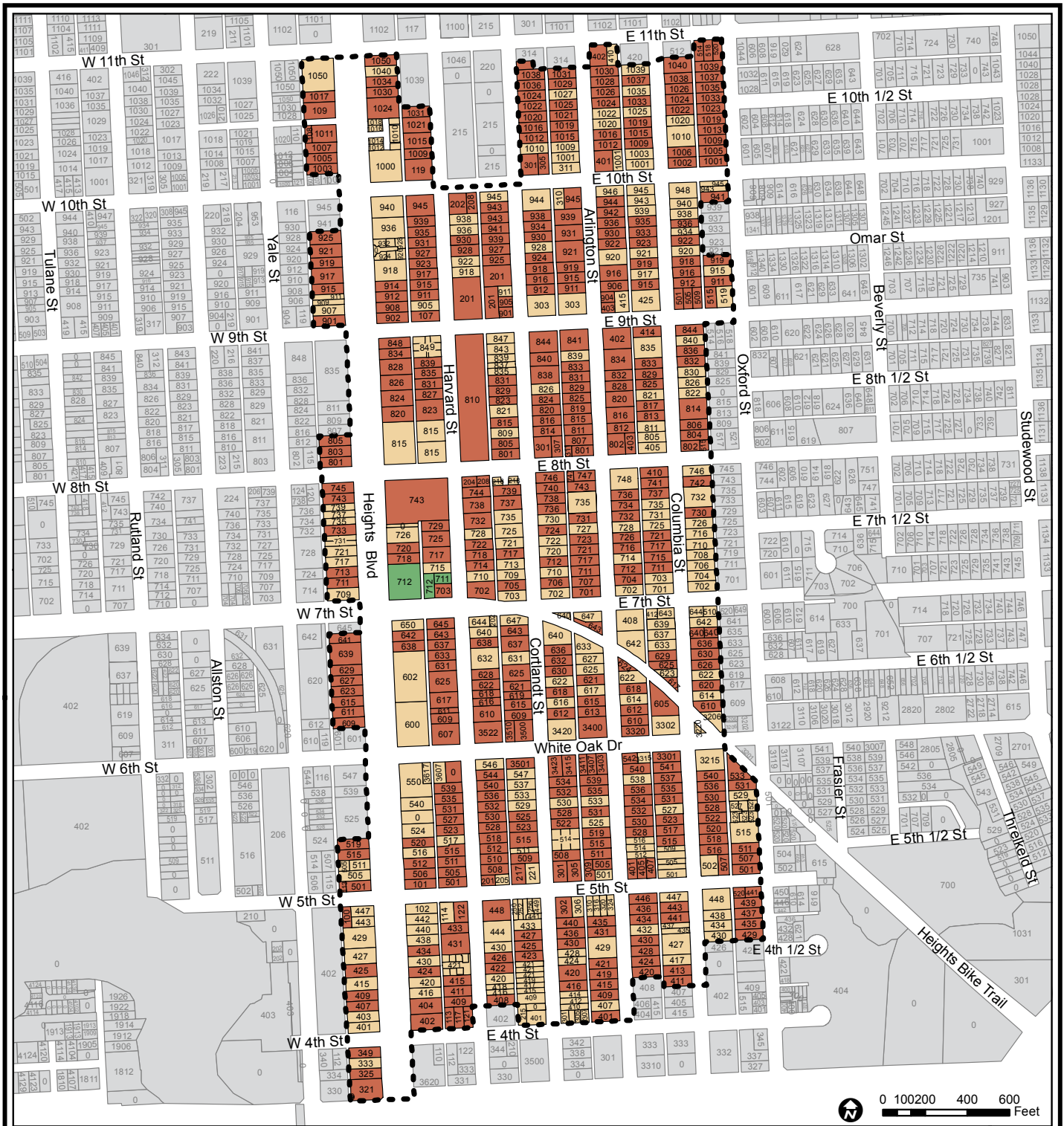
0.15 - 0.19 (95)	0.35 - 0.39 (49)
0.20 - 0.24 (115)	0.40 - 0.44 (41)
0.25 - 0.29 (80)	0.45 - 0.49 (47)
0.30 - 0.34 (58)	0.50 - 0.54 (49)
	N/A

City of Houston Historic Districts
Houston Heights South FAR

0 200 400 800 Feet
 Source: GIS Services Division,
 Vender Building Footprints 2015
 Date: September 2016
 Reference: pj19182

This map is made available for reference purposes only and should not be substituted for a survey product. The City of Houston will not accept liability of any kind in conjunction with its use.





Houston Heights South Historic District

Historic District Boundary
 - - - - -

Building Classification

- Contributing
- Non-Contributing
- Park

Established: June 29, 2011
 Source: GIS Services Division
 Date: 4/24/2013
 Reference: pj17025_Heights_South

This map is made available for reference purposes only and should not be substituted for a survey product. The City of Houston will not accept liability of any kind in conjunction with its use.



PLANNING & DEVELOPMENT DEPARTMENT

HOUSTON HEIGHTS WEST HISTORIC DISTRICT



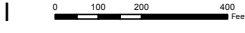


[] Parcels
 [] Building Footprints
 [] Houston Heights West

City of Houston Historic Districts Houston Heights West Building Size

Building Size (Square Feet)

■ 500 - 999 (31)	■ 2500 - 2999 (69)
■ 1000 - 1499 (165)	■ 3000 - 3499 (35)
■ 1500 - 1999 (93)	■ > 3500 (36)
■ 2000 - 2499 (84)	■ N/A (12)



Source: GIS Services Division,
 Vender Building Footprints 2015
 Date: August 2016
 Reference: pj19114

This map is made available for reference purposes only and should not be substituted for a survey product. The City of Houston will not accept liability of any kind in conjunction with its use.





- Parcels
- Building Footprints
- Houston Heights West

Lot Coverage

Less than 5% (4)	40% - 49% (160)
5% - 9% (0)	50% - 59% (93)
10% - 19% (8)	60% - 69% (38)
20% - 29% (60)	70% - 100% (30)
30% - 39% (132)	

**City of Houston Historic Districts
Houston Heights West Lot Coverage**

Source: GIS Services Division,
 Vender Building Footprints 2015
 Date: June 2016
 Reference: pj18988

This map is made available for reference purposes only and should not be substituted for a survey product. The City of Houston will not accept liability of any kind in conjunction with its use.



**PLANNING &
DEVELOPMENT
DEPARTMENT**



Lot Size (Square Feet)

< 4000 (74)	7000 - 7999 (13)
4000 - 4999 (91)	8000 - 8999 (47)
5000 - 5999 (37)	9000 - 9999 (11)
6000 - 6999 (225)	> 10,000 (25)
	N/A (2)

City of Houston Historic Districts
Houston Heights West Lot Size

0 100 200 400 Feet

Source: GIS Services Division,
 Vendor Building Footprints 2015
 Date: August 2016
 Reference: pj19113

This map is made available for reference purposes only and should not be substituted for a survey product. The City of Houston will not accept liability of any kind in conjunction with its use.



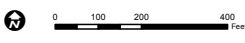


- Parcels
- Building Footprints
- Houston Heights West

FAR (Floor to Area Ratio)

0.15 - 0.19 (66)	0.35 - 0.39 (35)
0.20 - 0.24 (71)	0.40 - 0.44 (34)
0.25 - 0.29 (69)	0.45 - 0.49 (31)
0.30 - 0.34 (56)	0.50 - 0.54 (29)
N/A	

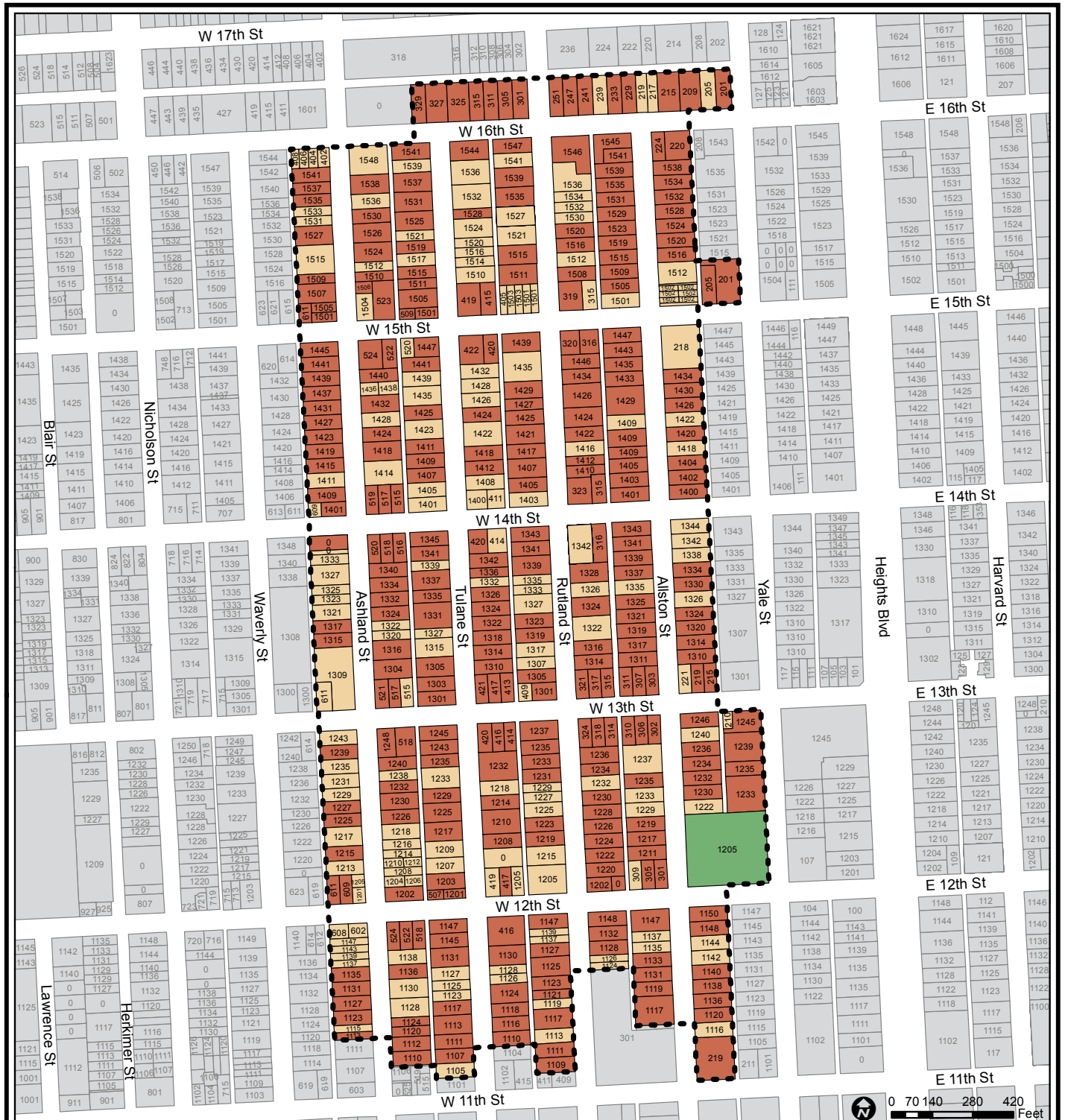
City of Houston Historic Districts
Houston Heights West FAR



Source: GIS Services Division,
 Vender Building Footprints 2015
 Date: September 2016
 Reference: pj19182

This map is made available for reference purposes only and should not be substituted for a survey product. The City of Houston will not accept liability of any kind in conjunction with its use.





Houston Heights West Historic District

Historic District Boundary
 - - - - -

Building Classification

- Contributing
- Non-Contributing
- Park

Established: December 19, 2007
 Source: GIS Services Division
 Date: May 21, 2013
 Reference: pj17025_Heights_West

This map is made available for reference purposes only and should not be substituted for a survey product. The City of Houston will not accept liability of any kind in conjunction with its use.



PLANNING & DEVELOPMENT DEPARTMENT

NORHILL HISTORIC DISTRICT



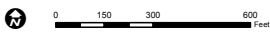


[] Parcels
 [] Building Footprints
 [] Norhill

Building Size (Square Feet)

< 500 (1)	2000 - 2499 (30)
500 - 999 (86)	2500 - 2999 (18)
1000 - 1499 (562)	3000 - 3499 (2)
1500 - 1999 (138)	> 3500 (6)
	N/A (11)

City of Houston Historic Districts Norhill Building Size



Source: GIS Services Division,
 Vender Building Footprints 2015
 Date: August 2016
 Reference: pj19114

This map is made available for reference purposes only and should not be substituted for a survey product. The City of Houston will not accept liability of any kind in conjunction with its use.





[] Parcels
 [] Building Footprints
 [] Norhill

Lot Coverage

Less than 5% (2)	40% - 49% (404)
5% - 9% (1)	50% - 59% (125)
10% - 19% (5)	60% - 69% (21)
20% - 29% (35)	70% - 100% (1)
30% - 39% (259)	N/A (1)

**City of Houston Historic Districts
Norhill Lot Coverage**



Source: GIS Services Division,
 Vendor Building Footprints 2015
 Date: June 2016
 Reference: pj18988

This map is made available for reference purposes only and should not be substituted for a survey product. The City of Houston will not accept liability of any kind in conjunction with its use.





□ Parcels
 □ Building Footprints
 □ Norhill

Lot Size (Square Feet)

 < 4000 (3)	 7000 - 7999 (19)
 4000 - 4999 (3)	 8000 - 8999 (4)
 5000 - 5999 (773)	 > 10,000 (14)
 6000 - 6999 (38)	

City of Houston Historic Districts
Norhill Lot Size

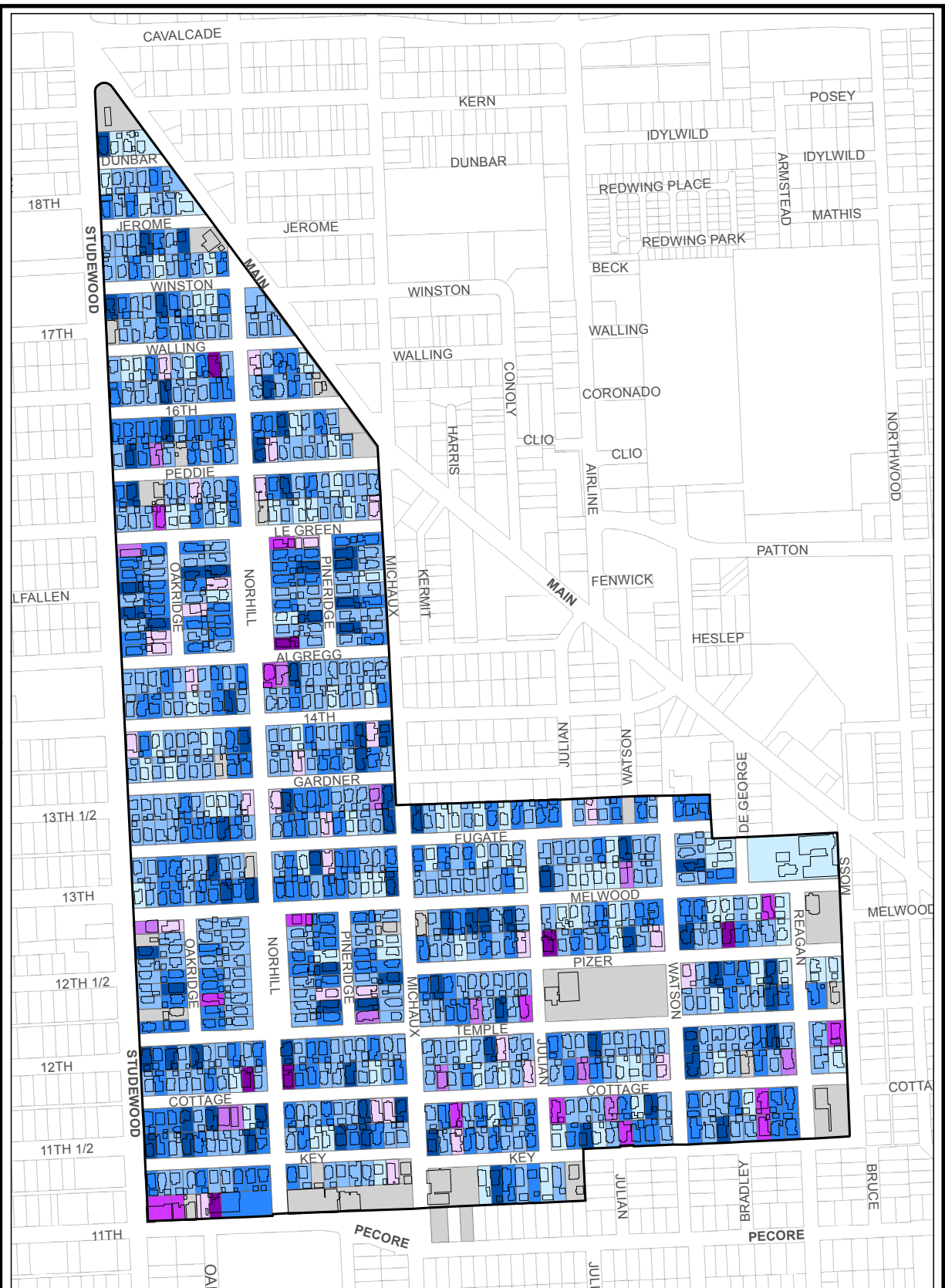


Source: GIS Services Division,
 Vender Building Footprints 2015
 Date: August 2016
 Reference: pj19113

This map is made available for reference purposes
 only and should not be substituted for a survey
 product. The City of Houston will not accept
 liability of any kind in conjunction with its use.



**PLANNING &
 DEVELOPMENT
 DEPARTMENT**



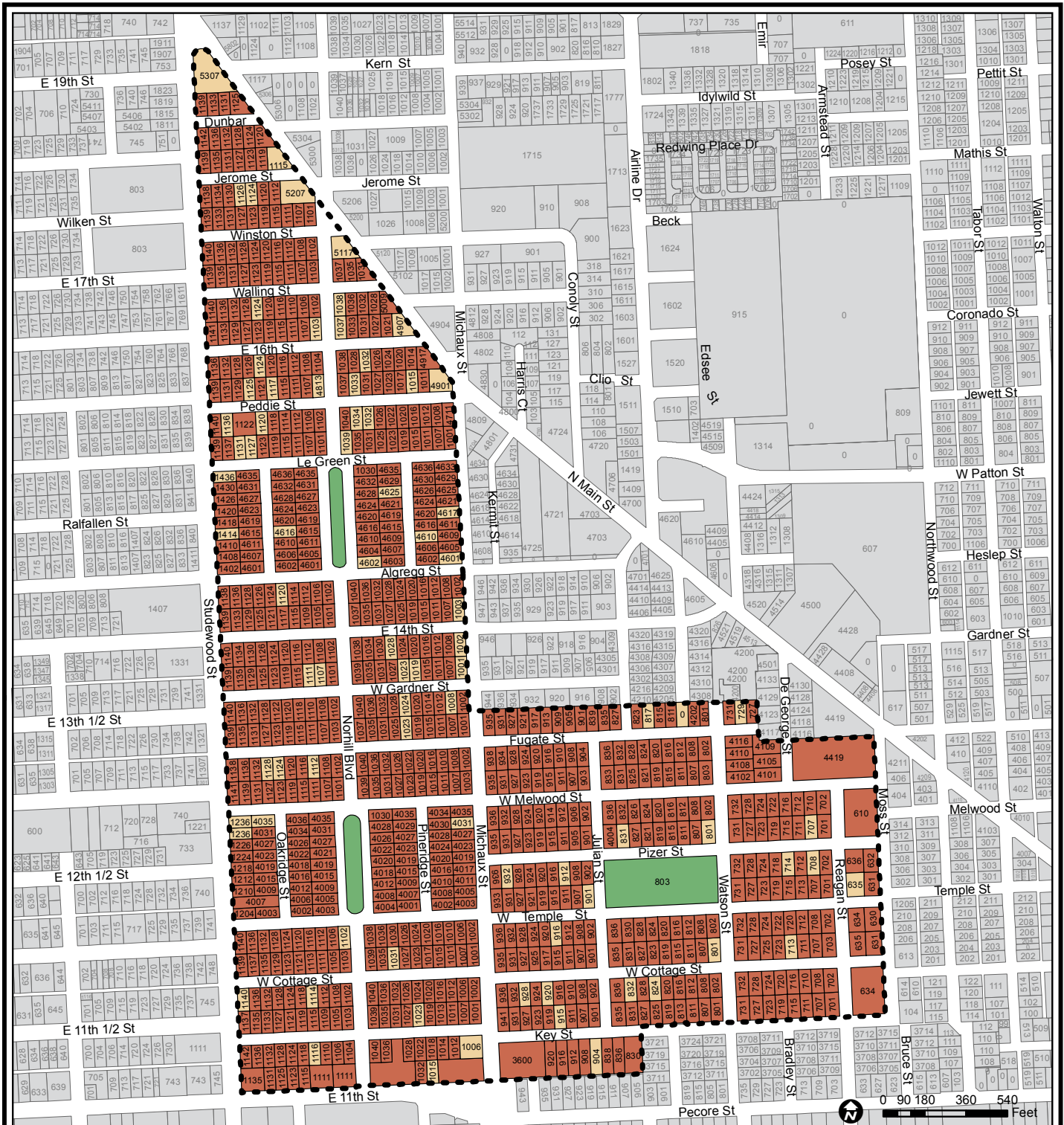
	Parcels
	Building Footprints
	Norhill
FAR (Floor to Area Ratio)	
	0.15 - 0.19 (96)
	0.20 - 0.24 (355)
	0.25 - 0.29 (220)
	0.30 - 0.34 (85)
	0.35 - 0.39 (34)
	0.40 - 0.44 (14)
	0.45 - 0.49 (15)
	0.50 - 0.54 (7)
	N/A

City of Houston Historic Districts Norhill FAR

Source: GIS Services Division,
 Vender Building Footprints 2015
 Date: September 2016
 Reference: pj19182

This map is made available for reference purposes only and should not be substituted for a survey product. The City of Houston will not accept liability of any kind in conjunction with its use.





Norhill Historic District

Historic District Boundary

Building Classification

- Contributing
- Non-Contributing
- Park

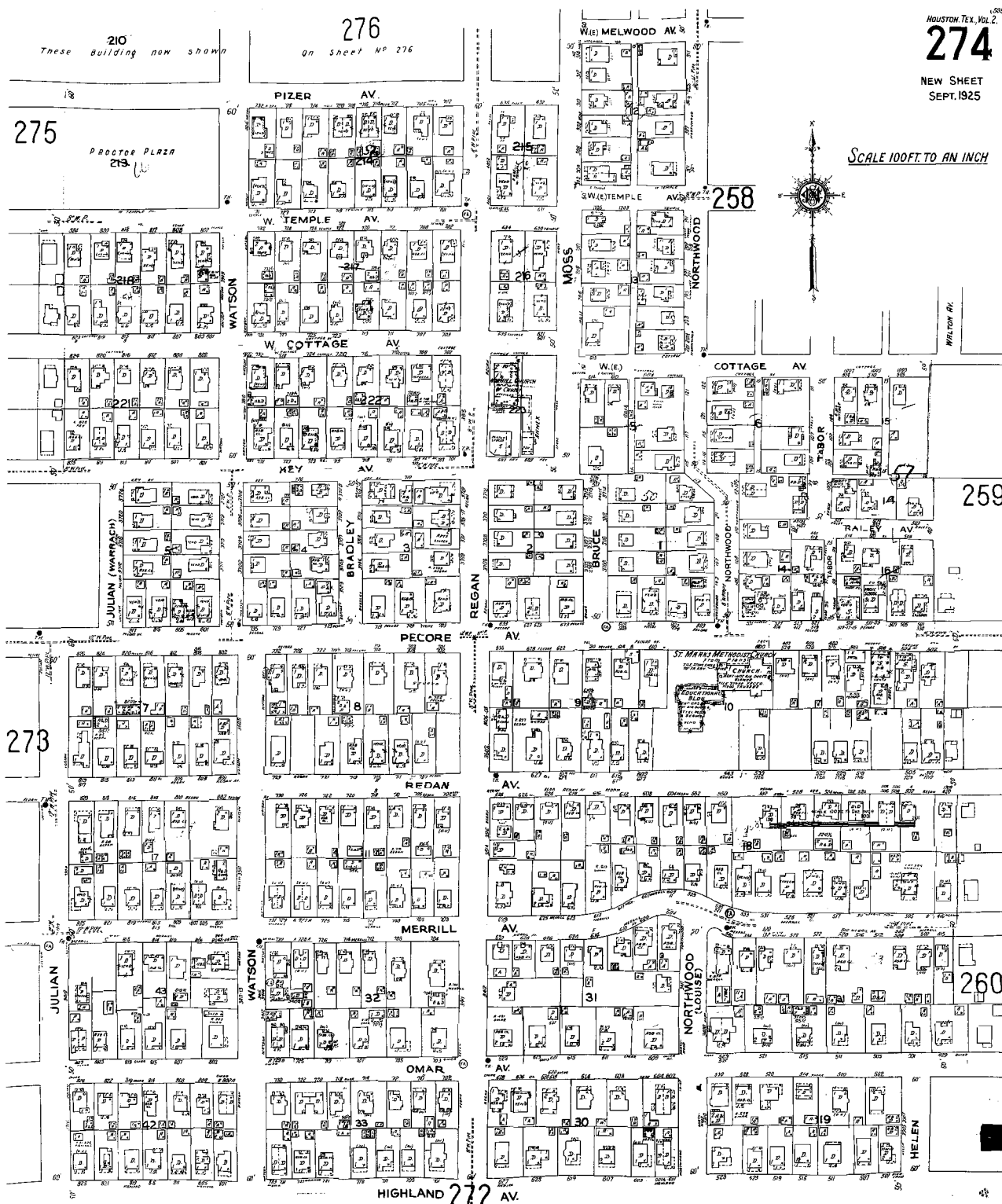
Established: June 14, 2000
 Source: GIS Services Division
 Date: May 1, 2013
 Reference: pj17025_Norhill

This map is made available for reference purposes only and should not be substituted for a survey product. The City of Houston will not accept liability of any kind in conjunction with its use.



PLANNING & DEVELOPMENT DEPARTMENT

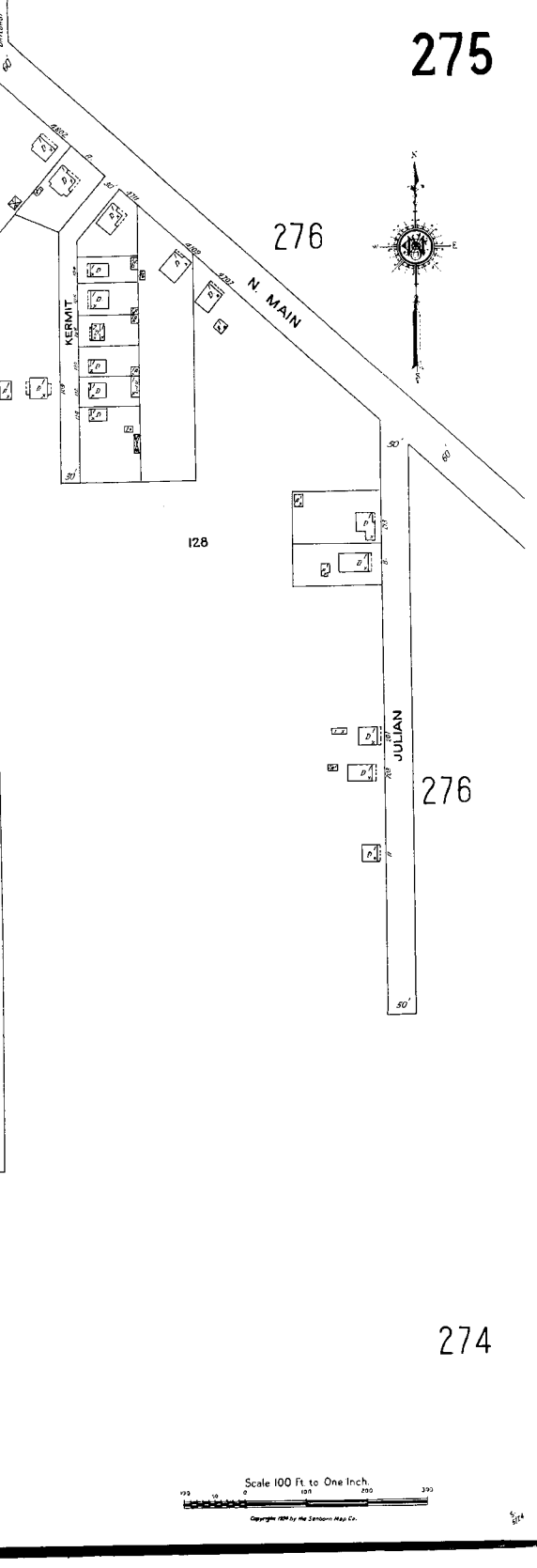
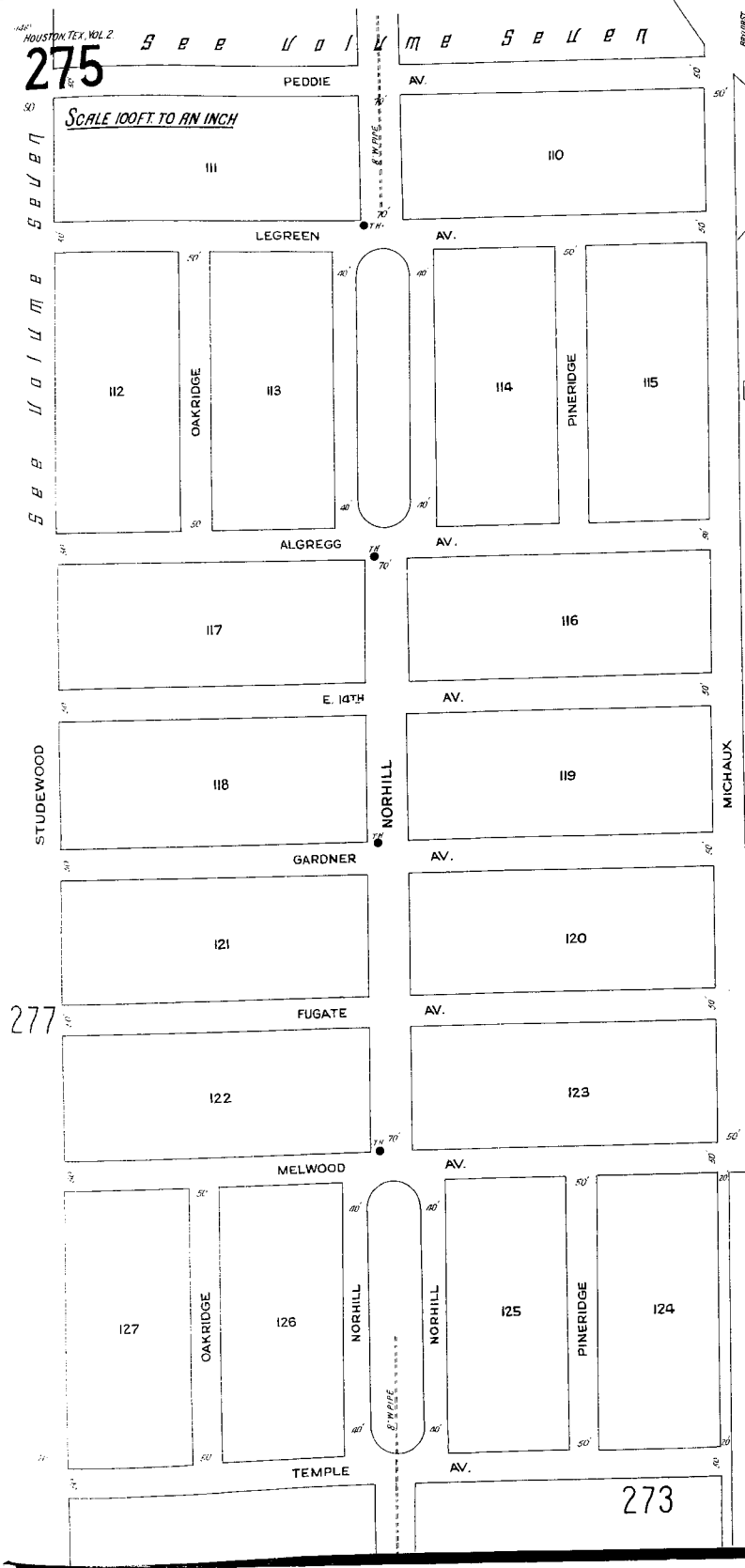
SCALE 100 FT. TO AN INCH



HOUSTON, TEX., VOL. 2
275

SCALE 100 FT. TO AN INCH

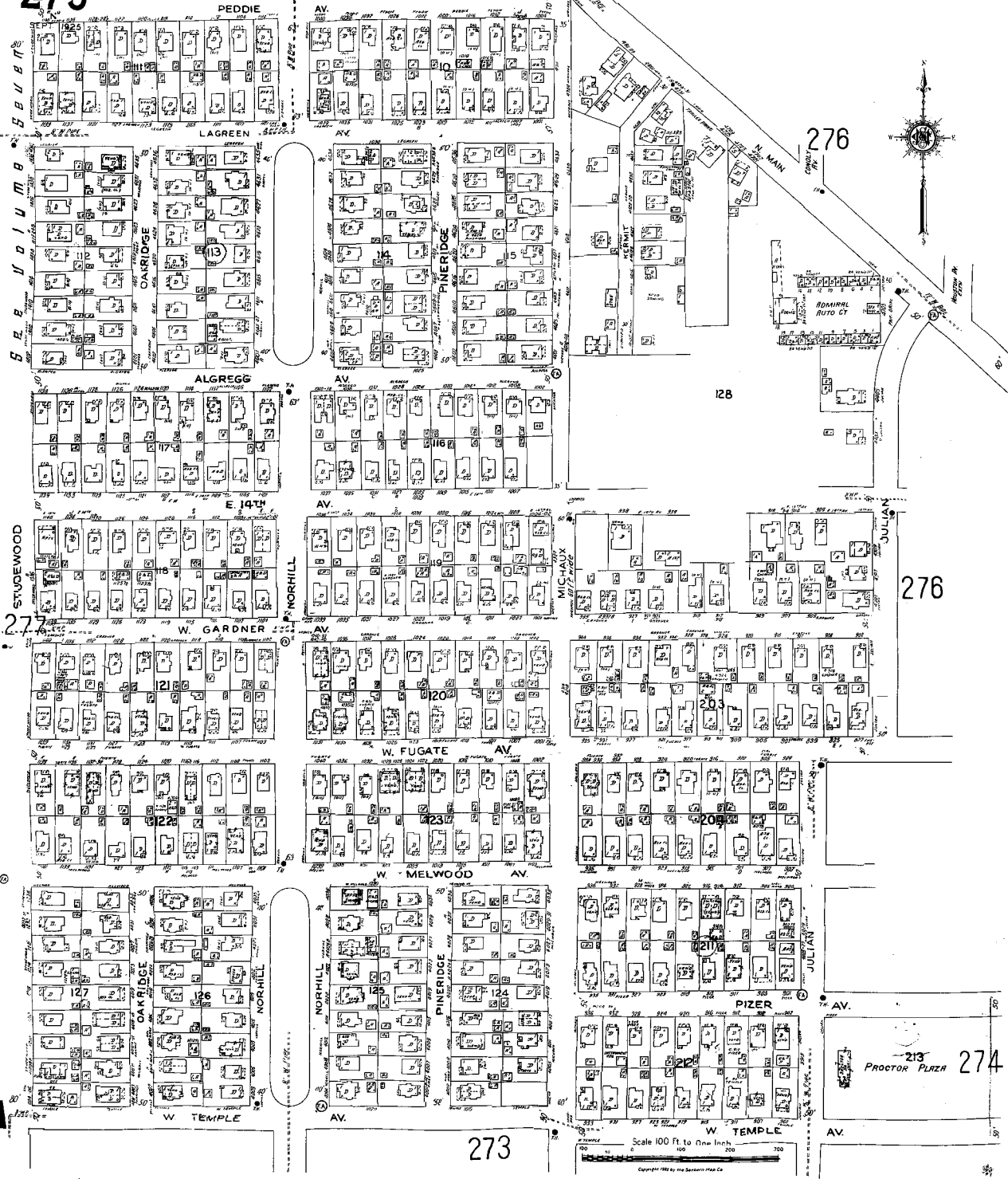
275

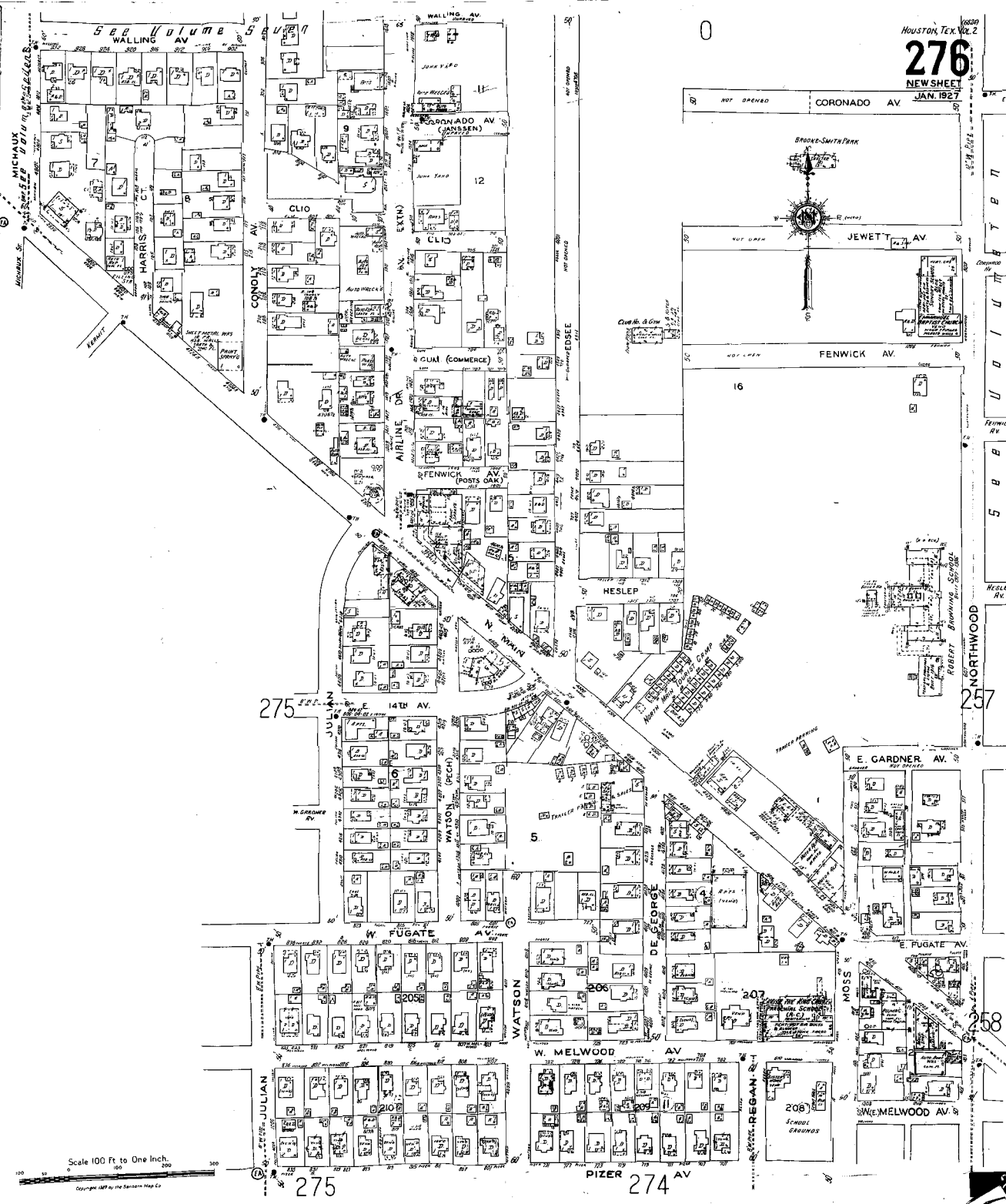
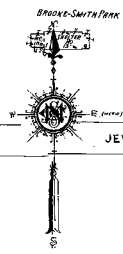


Scale 100 Ft to One Inch.
Copyright 1991 by McEwen Map Co.

1983
HOUSTON, TEX. VOL. 2
275

S E B U D I M E S E U B N







743

WOODLAND HEIGHTS HISTORIC DISTRICT



This map is made available for reference purposes only and should not be substituted for a survey product. The City of Houston will not accept liability of any kind in conjunction with its use.



City of Houston Historic Districts Woodland Heights Building Age





This map is made available for reference purposes only and should not be substituted for a survey product. The City of Houston will not accept liability of any kind in conjunction with its use.



PLANNING & DEVELOPMENT DEPARTMENT

**City of Houston Historic Districts
Woodland Heights Lot Coverage**



Source: GIS Services Division, Vendor Building Footprints 2015
Date: June 2016
Reference: PJ16998

Lot Coverage	
Less than 5% (1)	50% - 59% (72)
5% - 9% (1)	60% - 69% (16)
10% - 19% (3)	70% - 100% (1)
20% - 29% (38)	
30% - 39% (103)	
40% - 49% (151)	

- Parcels
- Building Footprints
- Woodland Heights





This map is made available for reference purposes only and should not be substituted for a survey product. The City of Houston will not accept liability of any kind in conjunction with its use.



PLANNING & DEVELOPMENT DEPARTMENT

**City of Houston Historic Districts
Woodland Heights FAR**

Source: GIS Services Division, Vendor Building Footprints 2015
Date: September 2016
Reference: #19182

FAR (Floor to Area Ratio)	Count
0.15 - 0.19	(29)
0.20 - 0.24	(75)
0.25 - 0.29	(73)
0.30 - 0.34	(59)
0.35 - 0.39	(43)
0.40 - 0.44	(32)
0.45 - 0.49	(31)
0.50 - 0.54	(14)
N/A	

- Parcels
- Building Footprints
- Woodland Heights



Woodland Heights Historic District

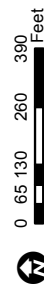
Historic District Boundary

Building Classification

Contributing

Non-Contributing

Established: July 29, 2011
 Source: GIS Services Division
 Date: March 11, 2014
 Reference: pj17480



This map is made available for reference purposes only and should not be substituted for a survey product. The City of Houston will not accept liability of any kind in conjunction with its use.



**PLANNING &
DEVELOPMENT
DEPARTMENT**

