


HORIZONS CLOSING SESSION

PSEFI October 6, 2016
Professional Surveyors Educational Foundation, Inc.

Platting Workshop



PSEFI 2016 SESSION 5.0

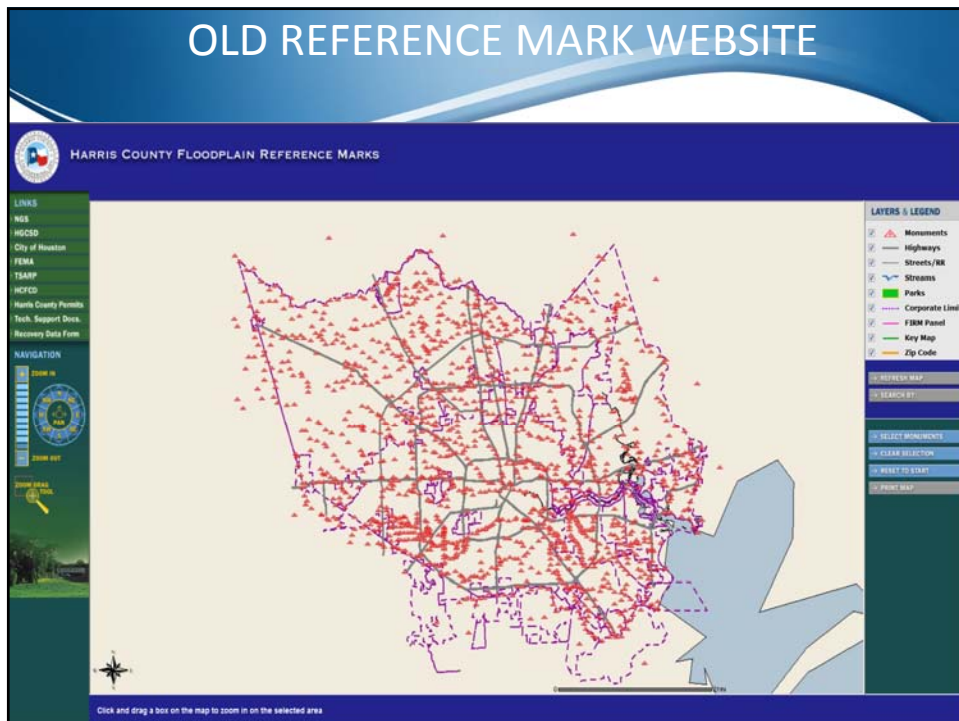
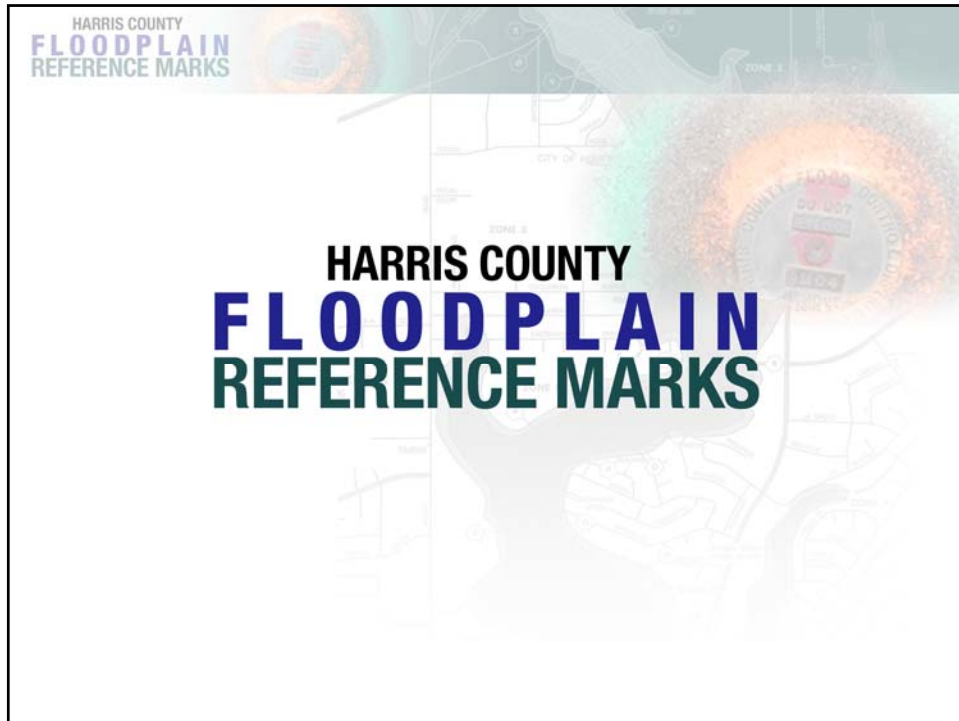
**HARRIS COUNTY FLOOD CONTROL SURVEYING
AND
CITY OF HOUSTON RESILIENCY**

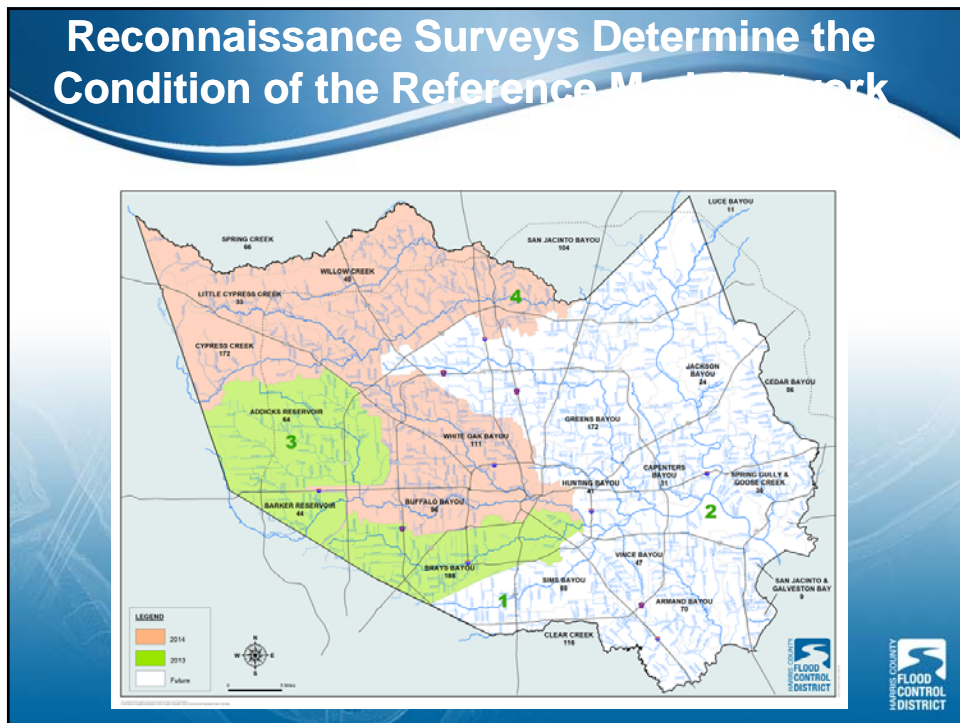
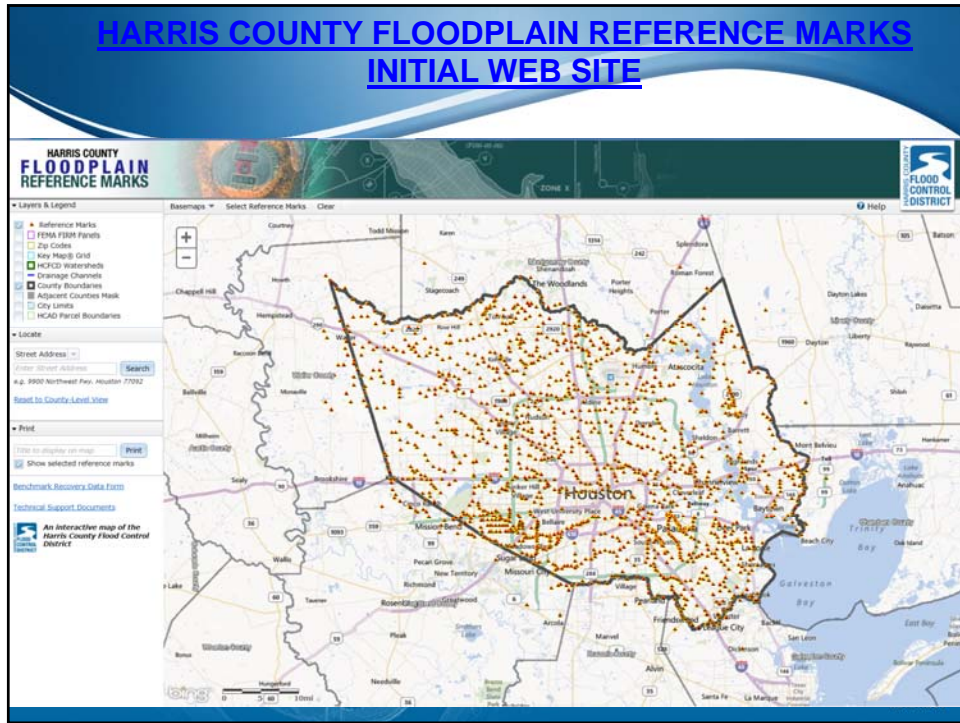
**Mark Sherley, P.E. and R.P.L.S.,
Survey Section Leader, Harris County Flood Control District**

and

Stephen Costello, Chief Resilience Officer
City of Houston, Office of the Mayor

2





DATA SHEET FOR REFERENCE MARK



HARRIS COUNTY FLOODPLAIN REFERENCE MARKS

Floodplain RM No.:	110610	Reference Mark Status	
Stream Number:	K140-00-00	Date:	5/2/2003
County:	Harris	Condition:	Established
Key Map No.:	329P	State:	Texas
NGS Classification⁽¹⁾:	Range VI	Established By:	Landtech Consultants, Inc.
RM's Directly Tied:	110595 110585 110655	Date Established:	5/2/2003
Units of Measure:	US Survey Foot	Watershed:	Cypress
Horizontal Datum:	NAD83	Survey Method Horz:	NONE
Horizontal Adj.⁽²⁾:	2001 Adjustment	Survey Method Vert:	LEVELING
Projection Zone:	Texas South Central 4204	Vertical Datum:	NAVD88
Station Name:	110610	Vertical Adj.⁽³⁾:	2001 Adjustment
Marker:	BRASS DISK	Geoid Model Used:	GEOID 99(Conus)
Stamping:	K14004 BM01	Contractor PID:	110610
Mark Logo:	HCPCD	Rod Depth:	0.00
Latitude:	30° 00' 51.00000" N	Sieve Depth:	0.00
Longitude:	95° 35' 13.00000" W	Geoid Height:	0.00
Ellipsoid Height:	0.00	Northing:	13932100.00
Convergence:	N/A	Eastng:	3048600.00
Satellite Observable:	No	Elevation⁽⁴⁾:	141.87
NGS PID (if applic):	N/A	Scale Factor:	0
		Elevation Factor:	0
		Combined Factor:	0

Notes:

1. This is NGS' new classification system. Range VI indicates that this position meets the 0.02m-0.05m Accuracy Standard for Horizontal Position, Ellipsoidal Height, and Orthometric Height (elevation) at the 95% confidence level (m=meters).
2. Horizontal Adjustment - This survey is constrained to the NGS Published Horizontal positions of the geodetic stations adjusted by NGS in 2001.
3. Vertical Adjustment - This survey is constrained to the NGS Published Elevation for Northeast 2250 CORS ARP adjusted by NGS in 2001 and as published in PID AJ6430, Epoch Date 1997.00.
4. The elevation shown equals the Ellipsoid Height minus Geoid Height (from GEOID99) plus a constant of 0.253 feet.

Station Recovery Data: [Recovery Data Form](#) - submit to Harris County Flood Control



Data Sheet Page 2 for Reference Mark



HARRIS COUNTY FLOODPLAIN REFERENCE MARKS

Floodplain RM No.:	110610	Northing:	13932100.00
Stream Number:	K140-00-00	Eastng:	3048600.00
		Elevation:	141.87

General Location
Intersection of SH 249 and Spring Cypress.

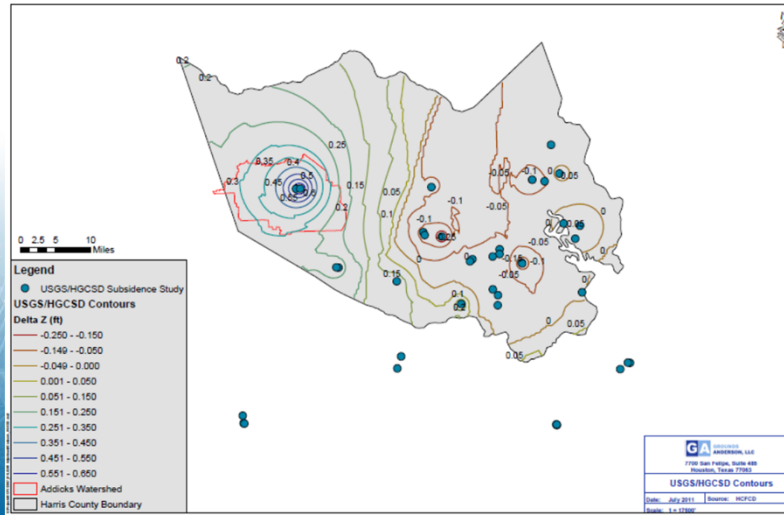
Station Sketch:

To Reach Description
From the intersection of SH 249 and Spring Cypress, northwest along Spring Cypress 0.15 miles to the benchmark on the right.

Photo 1-Station Detail:	Photo 2-Station Area Picture:



SUBSIDENCE ESTIMATE FROM HGCSO/USGS STUDY



DEALING WITH SUBSIDENCE

- **Instead of tying to a single monument in Harris County at the NE WWTP, tie to several, adjacent monuments.**
- **This will keep the Floodplain Reference Mark System on the same surface (NAVD 1988, 2001 Adjustment).**
- **Flood Insurance Study is tied to the same datum**
 - BFE, Contours, LiDAR, Survey, Profiles, Reservoir Elevations ...

HCFCD TAKE AWAY POINTS

- **WE ARE NOT RE-LEVELING**
- **USE EMAIL LINK ON RM WEBSITE TO REPORT ANY PROBLEMS WITH WEBSITE**
- **USE MULTIPLE MONUMENTS**
- **ANY QUESTIONS?**



PSEFI 2016 SESSION 5.0

CITY OF HOUSTON RESILIENCY

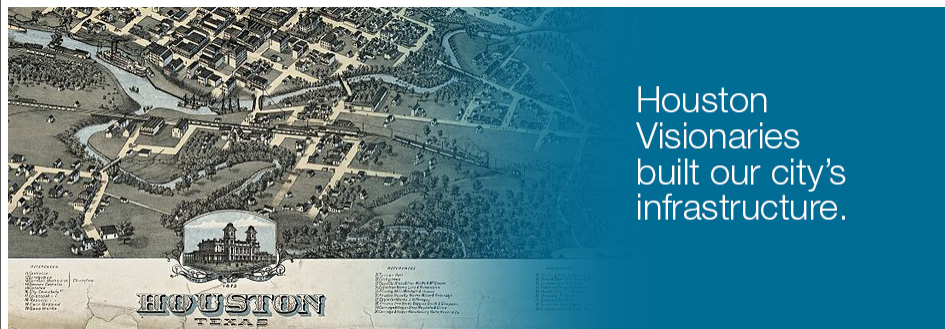
**Stephen Costello, Chief Resilience Officer
City of Houston, Office of the Mayor**

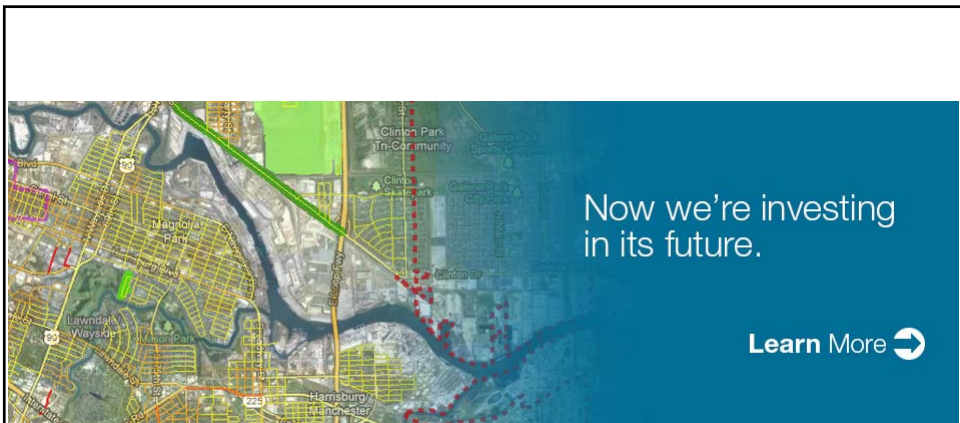
City Prepares for Possibility of Flooding Names Flood Czar...

May 4, 2016 -- In a major move designed to produce tangible results and instill confidence among residents, the mayor **announced the selection of Stephen Costello to fill the new position of Chief Resilience Officer, or Flood Czar.**

Costello, who is a civil engineer who has worked on numerous drainage projects, will report directly to the mayor and will have the sole responsibility of developing and implementing strategies that will improve drainage and reduce the risk of flooding. "The April 18 floods had a dramatic impact on our entire region," said Mayor Turner... We are going to do exponentially more than what they currently see."

13





Today's Closing Discussion:
Learning more about
Flooding and Drainage

CoH TAKE AWAY POINTS

- **Flooding versus Drainage**
 - **Task Force**
- **311 to register City Drainage issues**

QUESTIONS OR COMMENTS



This concludes our PSEFI October 6, 2016

Professional Surveyors Educational Foundation, Inc.



PLANNING &
DEVELOPMENT
DEPARTMENT

PLATTING WORKSHOP