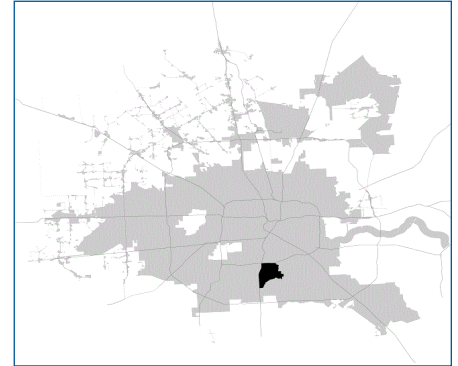


# SUPER Neighborhood RESOURCE ASSESSMENT



	Super Neighborhood		Houston	
	2000	2019	2000	2019
<b>Pop. characteristics</b>				
Total population	18,629	23,077	1,953,631	2,310,432
Persons per sq. mile	2,934	3,634	3,166	3,443
<b>Age of Population</b>				
Under 5 years	8%	8%	8%	8%
5- 17 years	23%	22%	19%	17%
18- 64 years	52%	55%	64%	65%
65 and over	18%	15%	9%	10%
<b>Ethnicity</b>				
Non Hispanic Whites	1%	2%	31%	24%
Non Hispanic Blacks	93%	75%	25%	22%
Hispanics	4%	20%	37%	45%
Non Hispanic Asians	1%	1%	6%	7%
Non Hispanic Others	1%	2%	1%	2%
<b>Income</b>				
Under \$25,000	59%	42%	33%	24%
\$25,000 to \$49,999	25%	30%	31%	24%
\$50,000 to \$99,999	12%	19%	24%	27%
Over \$100,000	3%	9%	12%	25%
<b>Median Household Income</b>	\$20,383	\$27,954	\$36,616	\$52,338
<b>Educational Status</b>				
No Diploma	37%	21%	30%	21%
High School Diploma	32%	35%	20%	23%
Some College	23%	33%	23%	23%
Bachelor's or Higher	7%	11%	27%	33%
<b>Housing and Households</b>				
Total housing units	7,611	9,660	782,378	968,704
Occupied	90%	84%	92%	89%
Vacant	10%	16%	8%	11%
Total households	6,839	8,106	717,945	858,374
Family households	4,591	4,849	457,549	521,891
Median Housing Value	\$38,419	\$72,348	\$79,300	\$171,800

**Description**

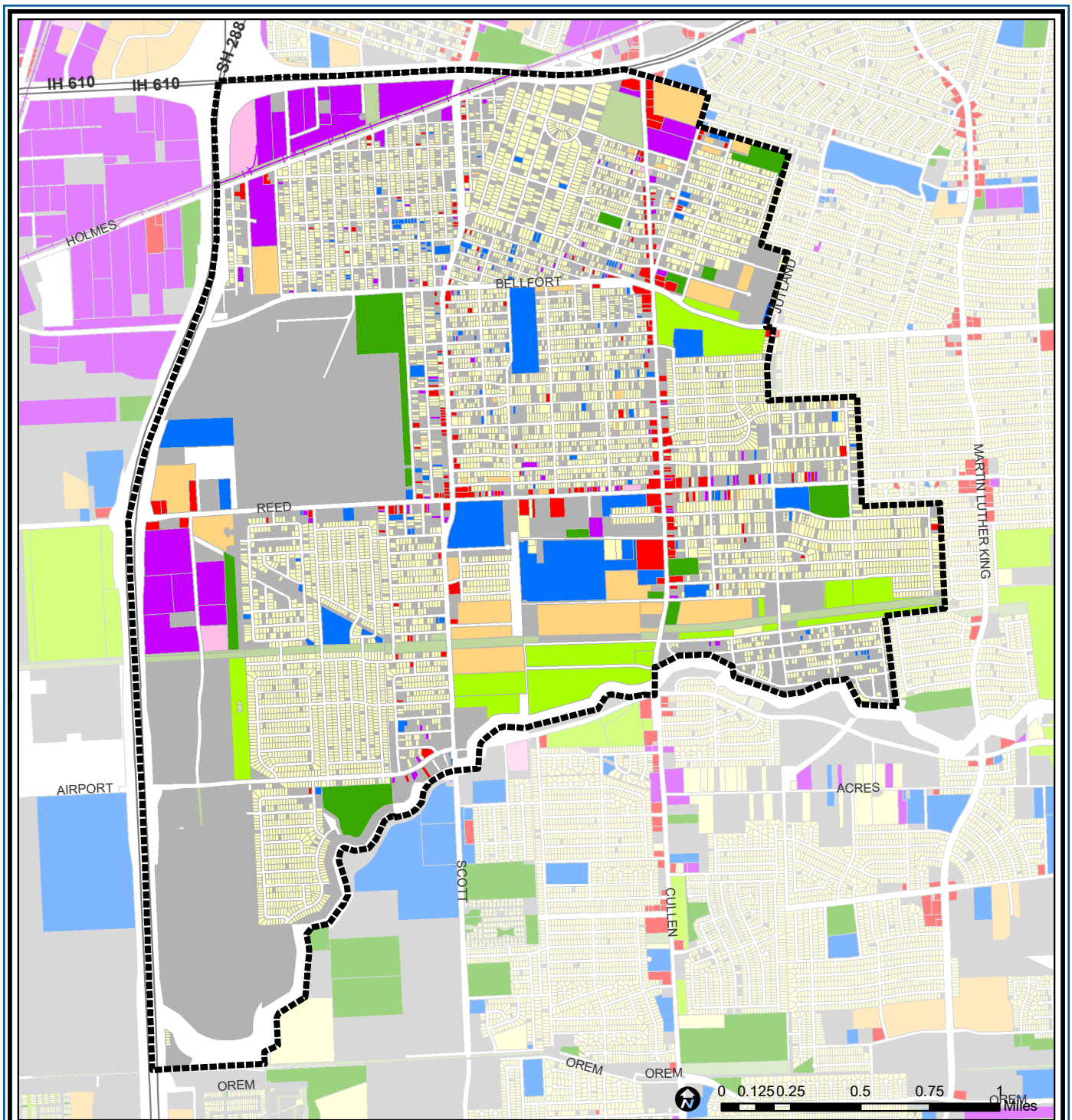
Sunnyside is the oldest African-American community in south central Houston. It was originally developed to provide homes outside the city, but close enough for residents to commute. It includes a number of tract home subdivisions on typical suburban streets, as well as the original frame homes interspersed with small churches of the original neighborhood. New developments revived parts of the community, especially along Cullen.

**Highlights**

- ✓ Houston City Council District D
- ✓ Houston Independent School District
- ✓ 5 Police beats (includes bordering beats)
- ✓ 4,063 acres (6.35 sq. miles)



**PLANNING &  
DEVELOPMENT  
DEPARTMENT**



## Sunnyside : Land Use

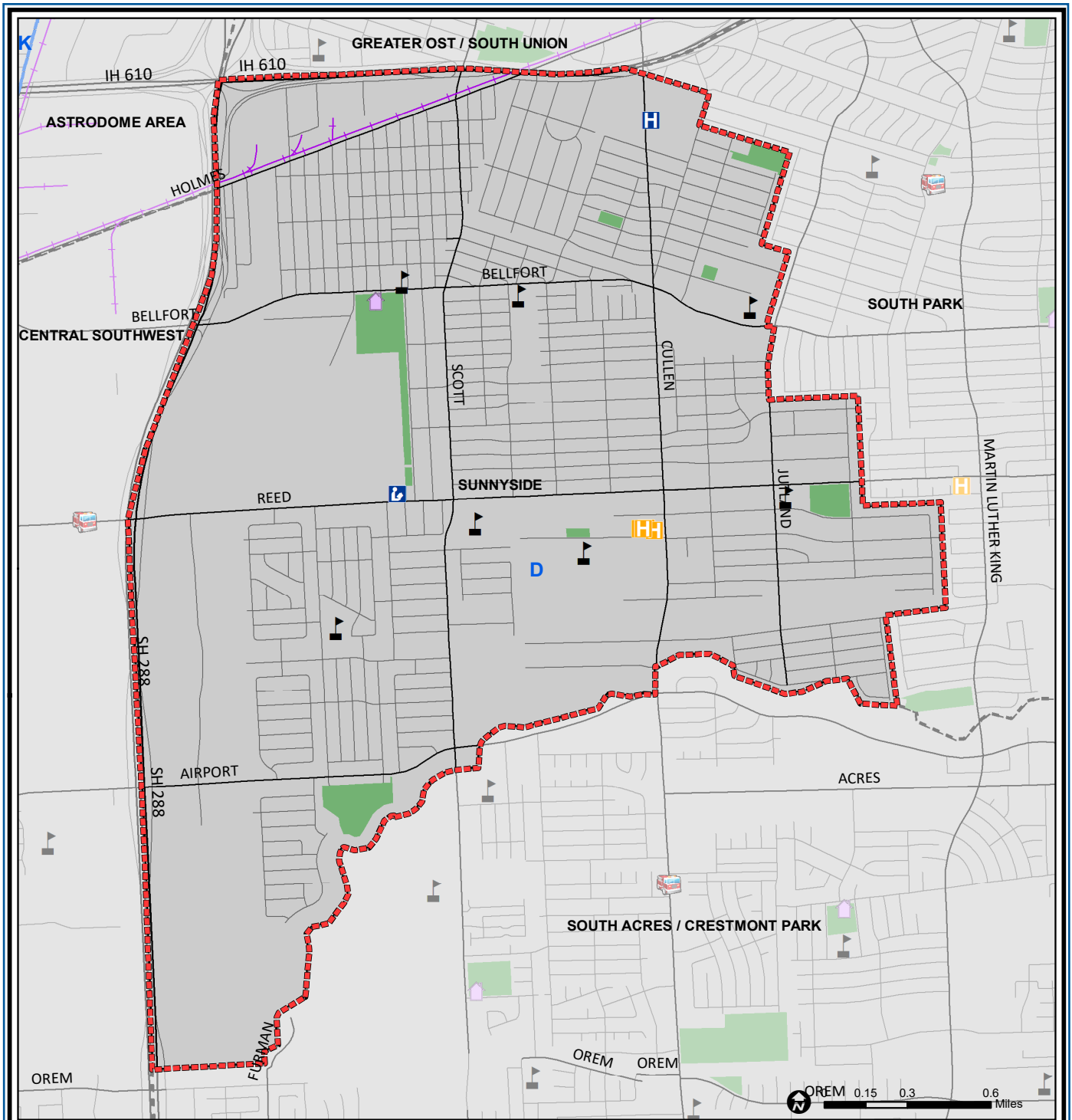
- |                             |                              |                         |
|-----------------------------|------------------------------|-------------------------|
| Freeway                     | Commercial                   | Parks and Open Space    |
| Rail Road                   | Office                       | Undeveloped             |
| Super Neighborhood Boundary | Industrial                   | Agricultural Production |
| Single-family Residential   | Public and Institutional     | Open Water              |
| Multi-family Residential    | Transportation and Utilities | Unknown                 |

Source: City of Houston GIS Database, HCAD  
Date: April 2021

This map is made available for reference purposes only and should not be substituted for a survey product. The City of Houston will not accept liability of any kind in conjunction with its use.



**PLANNING &  
DEVELOPMENT  
DEPARTMENT**



### Sunnyside : Public Facilities

- |                             |                         |                     |
|-----------------------------|-------------------------|---------------------|
| Super Neighborhood Boundary | Airports                | Rail Road           |
| Community Centers           | Harris County Hospitals | Metro Rail Stations |
| Fire Station                | Private Hospitals       | Metro Rail Line     |
| Police Station              | Other Health Facilities | Parks               |
| School                      | Library                 | TIRZ                |

Source: City of Houston GIS Database

Date: April 2021

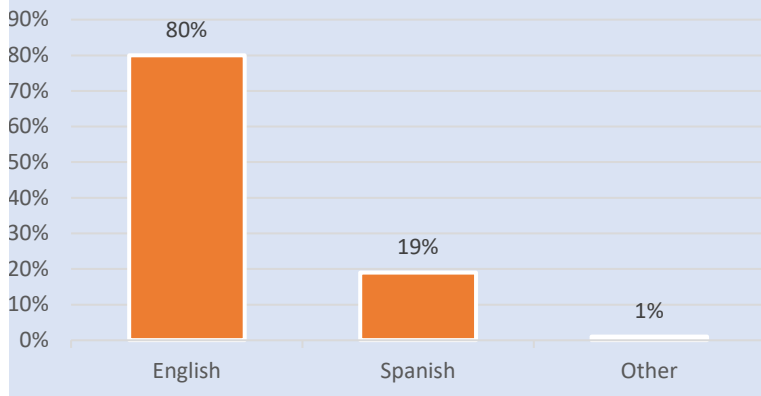
This map is made available for reference purposes only and should not be substituted for a survey product. The City of Houston will not accept liability of any kind in conjunction with its use.



**PLANNING & DEVELOPMENT DEPARTMENT**

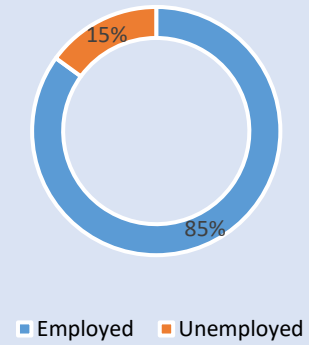
### Language Spoken at Home

#### SUNNYSIDE



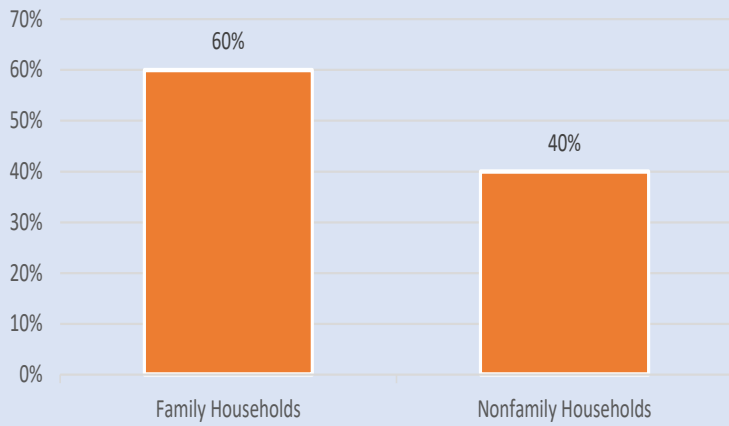
### Employment Status

#### SUNNYSIDE



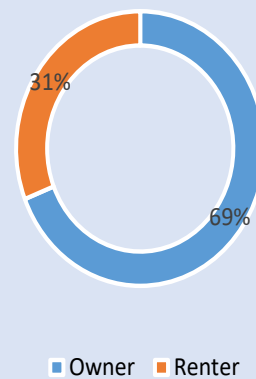
### Family Status

#### SUNNYSIDE



### Housing Occupancy

#### SUNNYSIDE



Source: U.S. Census Bureau, 2000  
American Community Survey, 2015-2019 Estimates



**PLANNING &  
DEVELOPMENT  
DEPARTMENT**