

ETHAN

EMERGENCY TELE-HEALTH + NAVIGATION



Houston Fire Department



David Persse, MD
Medical Director

Michael Gonzalez, MD
Associate Medical Director

AGENDA

- **Introductions**
- **The Challenge**
- **Our Solution - ETHAN**
- **The Future - Synapse**

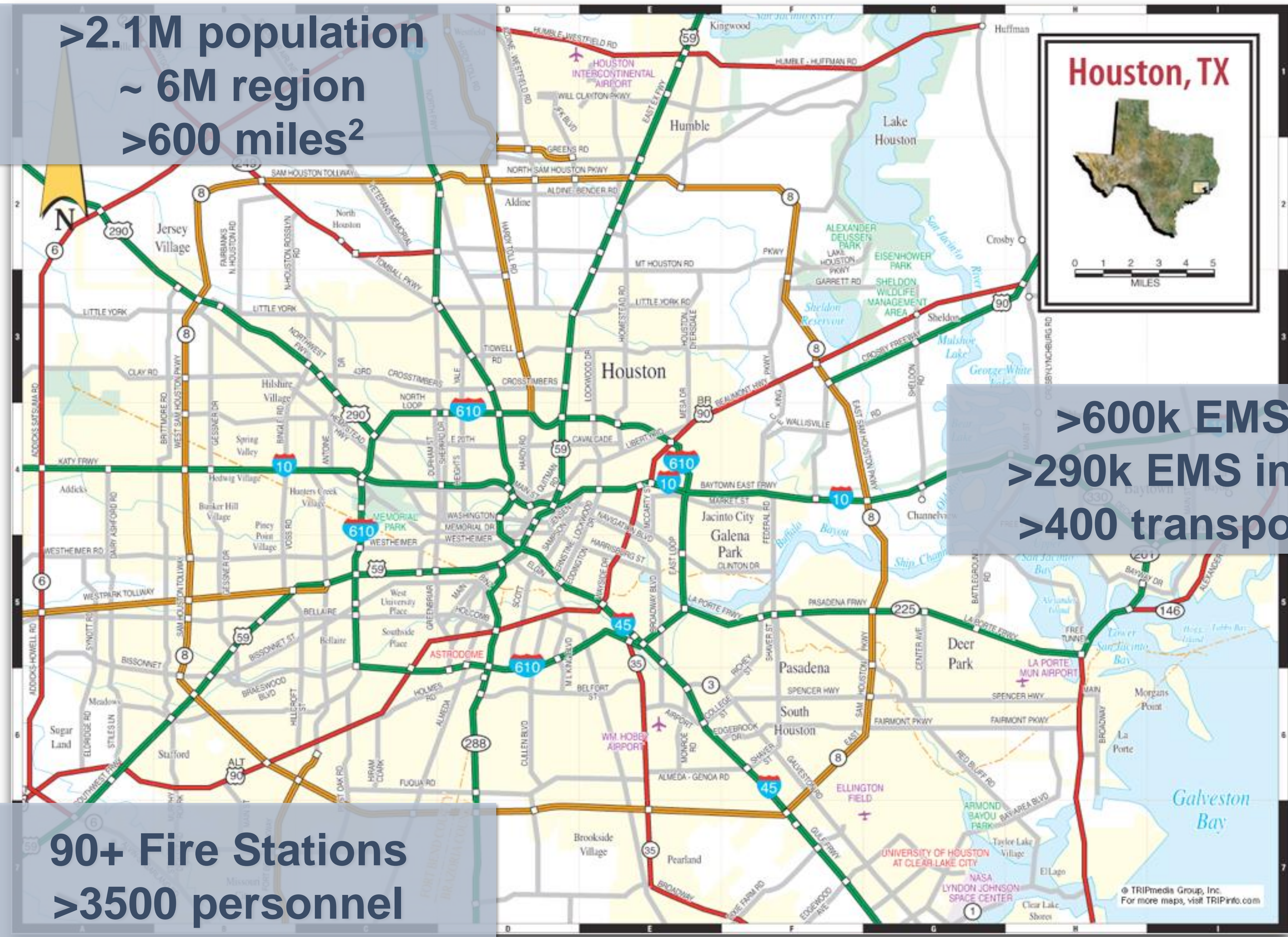


>2.1M population
~ 6M region
>600 miles²



>600k EMS calls
>290k EMS incidents
>400 transports/day

90+ Fire Stations
>3500 personnel



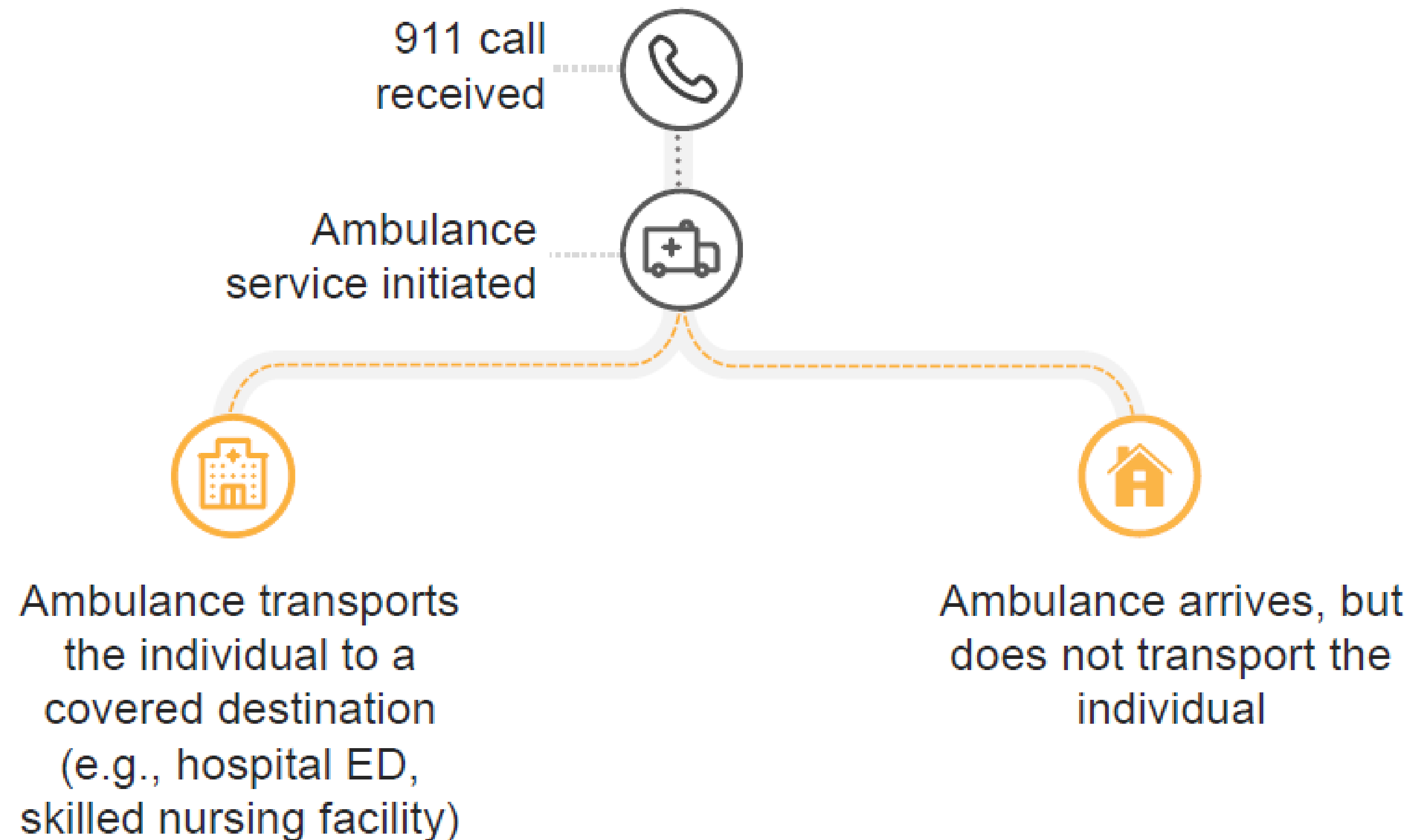
HOUSTON FIRE/EMS OPERATIONS

- **87% of HFD dispatches are EMS**
- **1115 Waiver Funding Opportunity**
- **ETHAN Launches 2014**

Current State

HFD

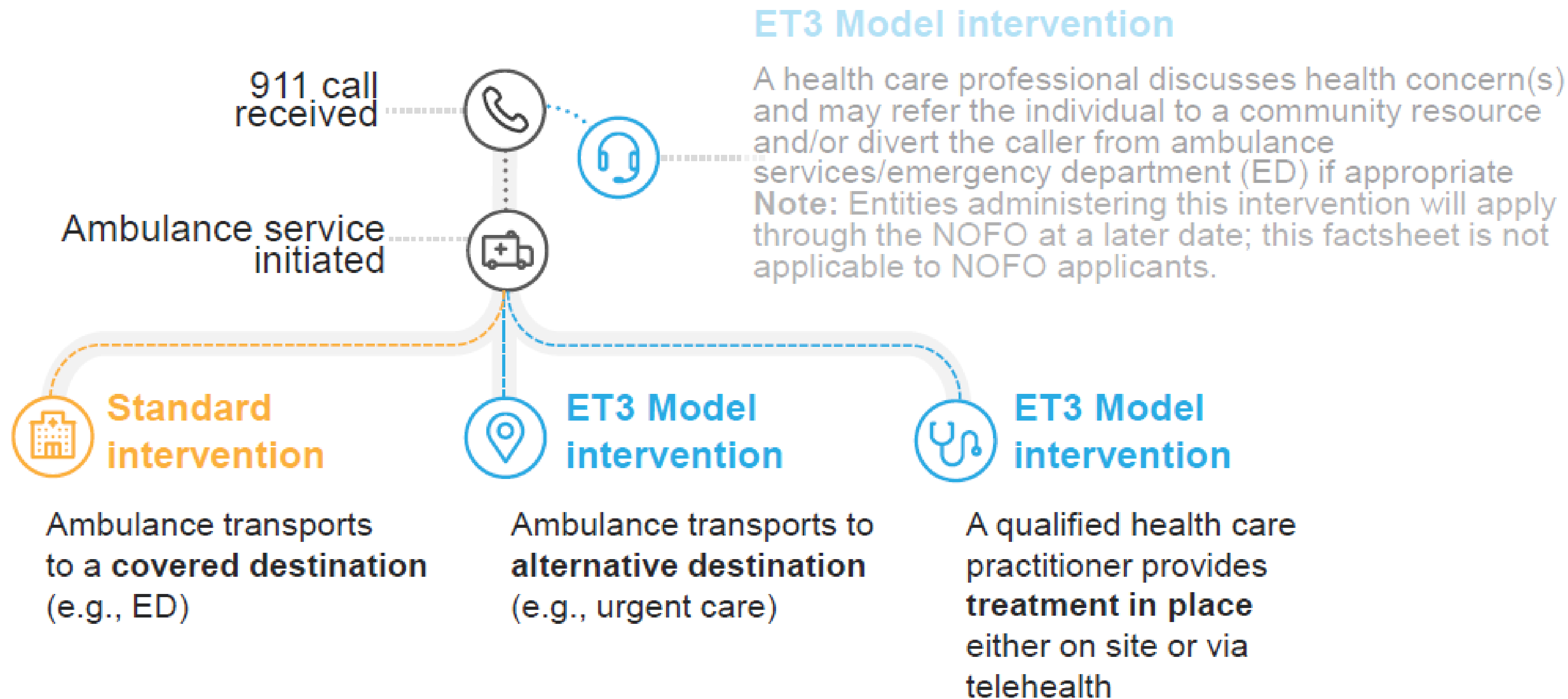
Medicare currently pays for emergency ground ambulance services only when beneficiaries are transported to a limited number of covered destinations even when a lower-acuity, lower-cost setting may more appropriately meet an individual's needs.



Re-aligning Incentives for Future State

HFD

ET3 Model interventions allow beneficiaries to get the care they need and enable ambulances to work more efficiently.



Blue = Model Services

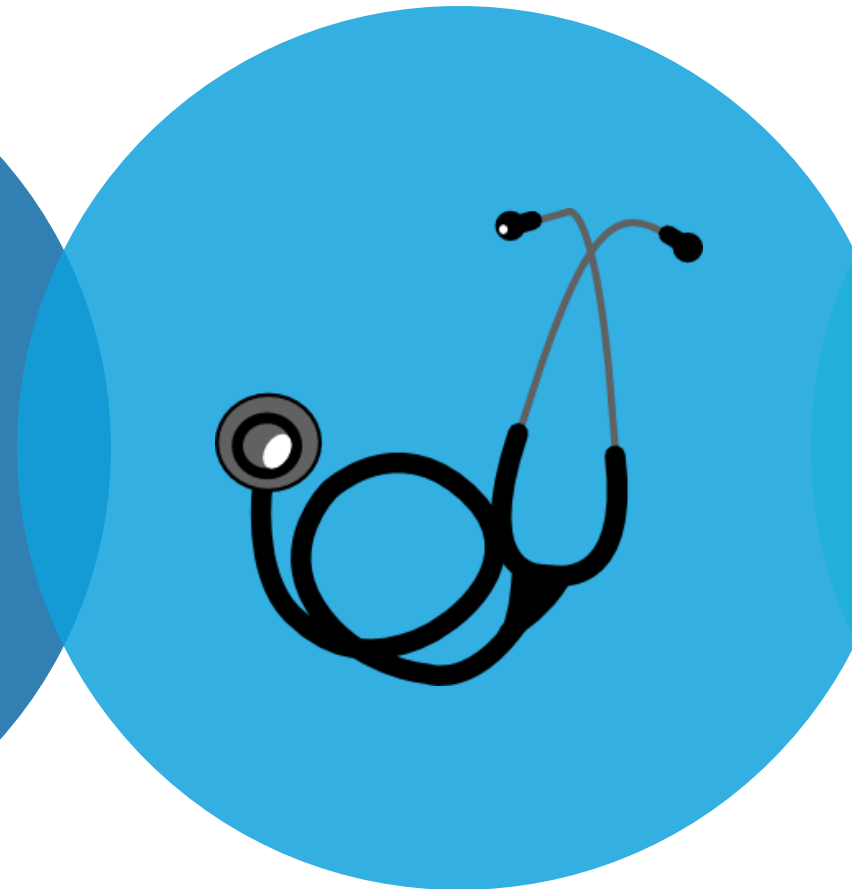
Orange = Standard Medicare Services

HOW DOES ETHAN WORK?

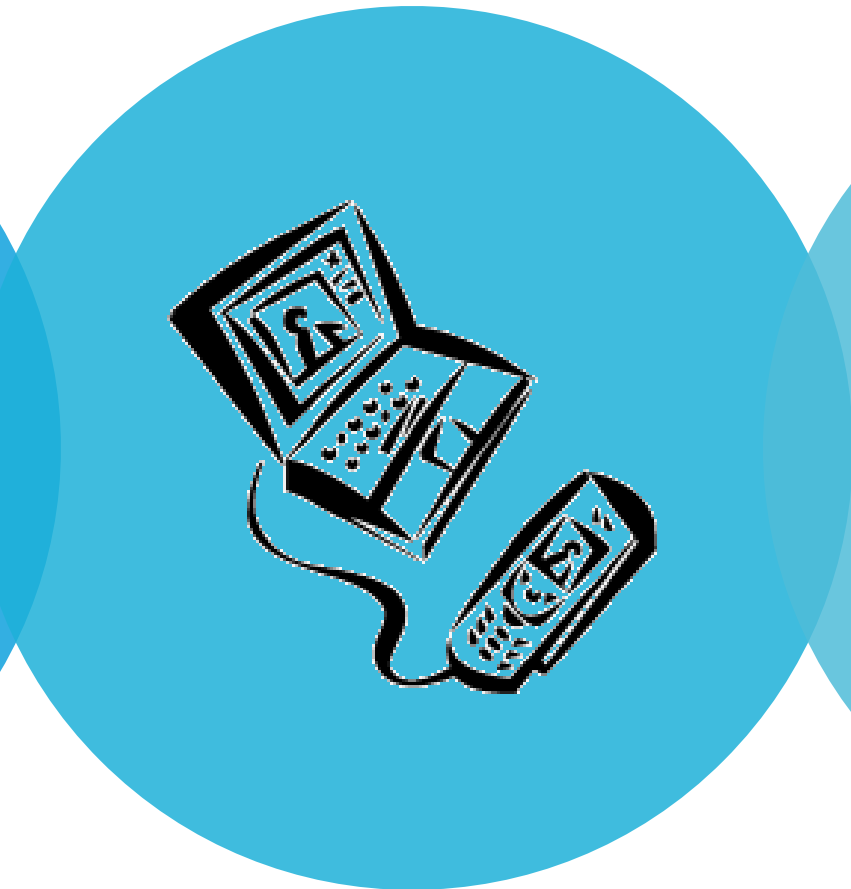
Step-by-Step



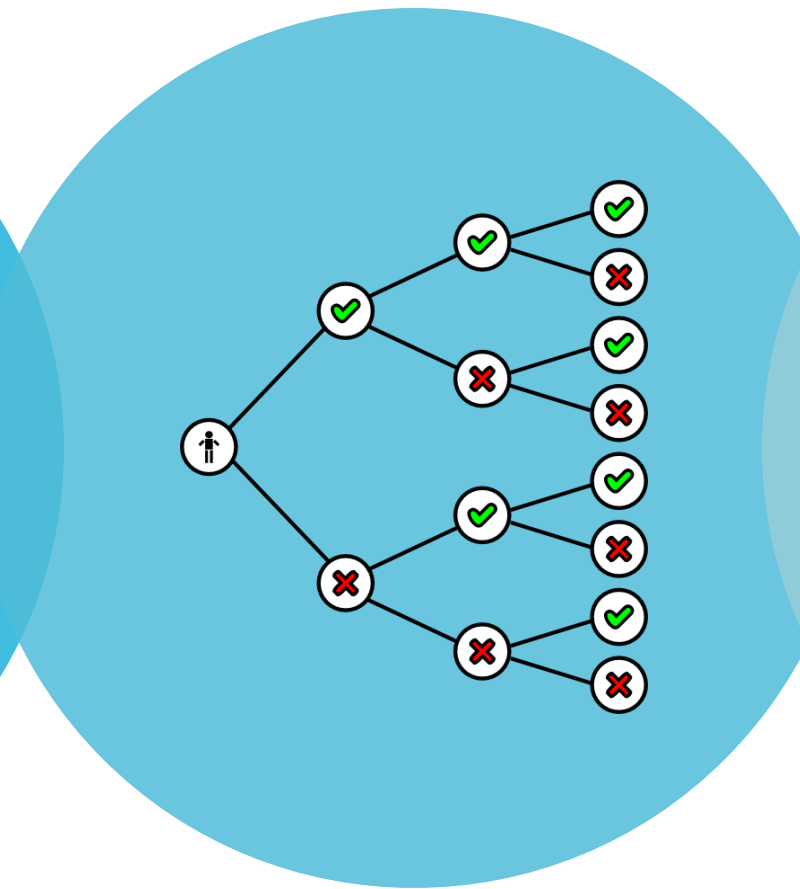
1
911 Call



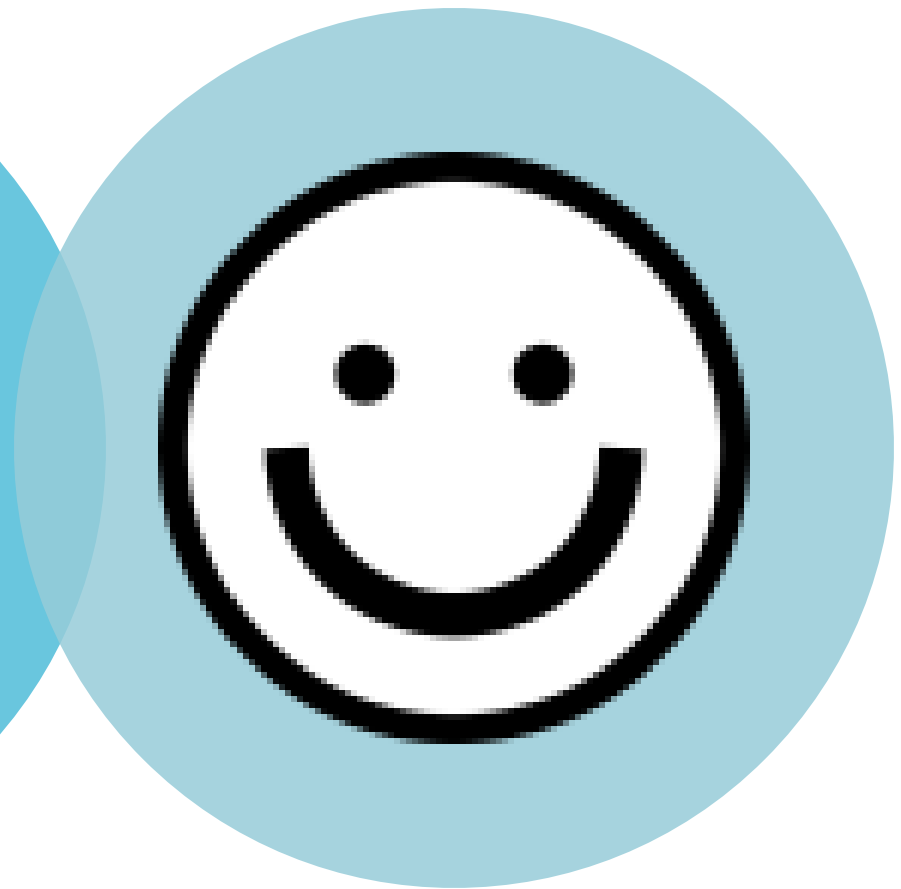
2
Field Assessment



3
ETHAN Call



4
Disposition



5
Care Houston

ETHAN

EMERGENCY TELE-HEALTH + NAVIGATION

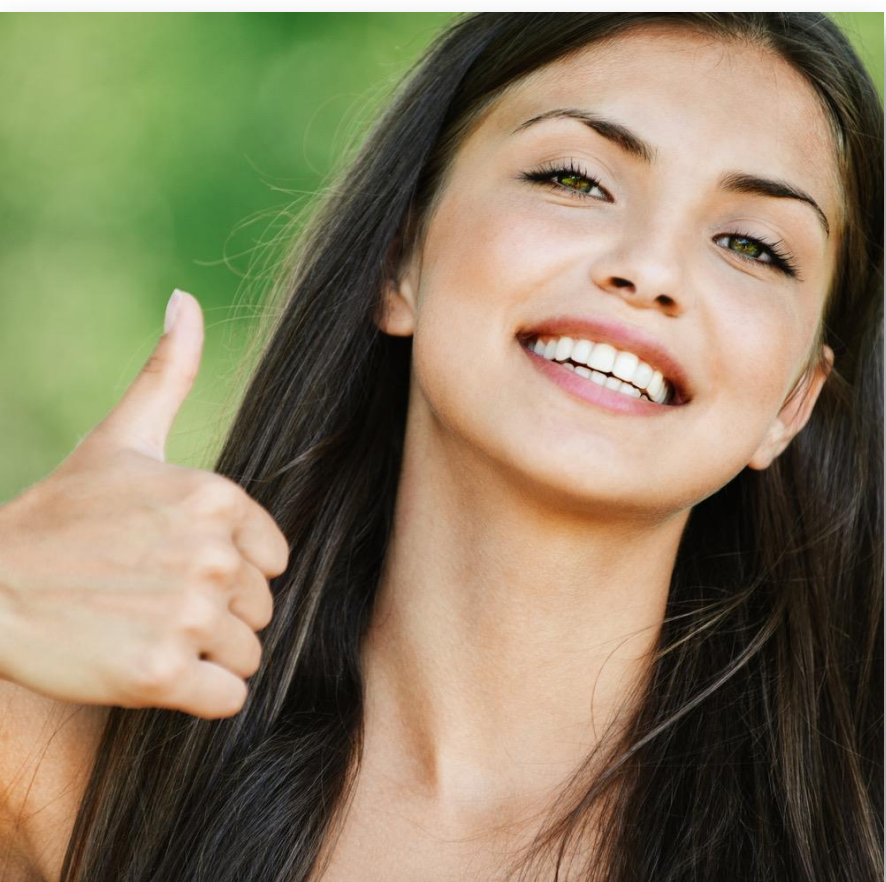
HFD



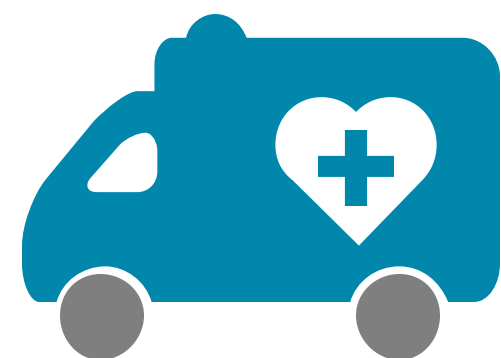


HFD

HFD/EMS OPERATIONS: PRE-ETHAN



911 CALL



6 min

15 min

25 min

30 min

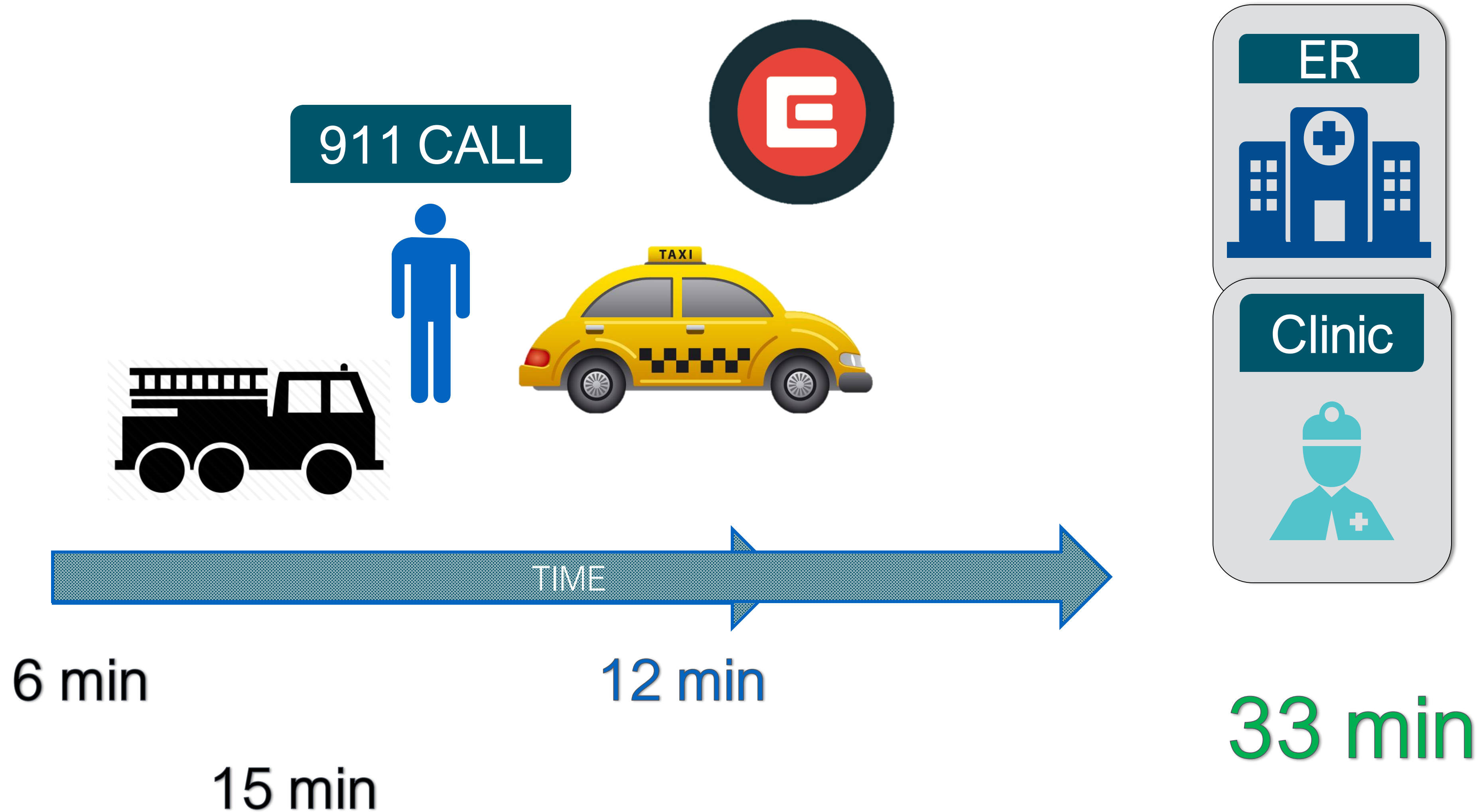
45 min

121 min



HFD

HFD/EMS OPERATIONS: ETHAN



ETHAN

EMERGENCY TELE-HEALTH + NAVIGATION

Insurer

Patient

System

\$1,200 - 2,200

71-121 min

\$220



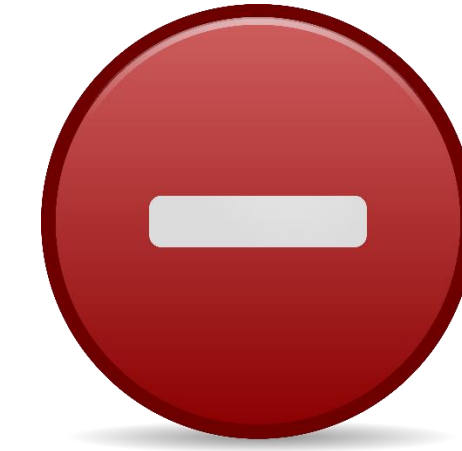
33 min

ETHAN

EMERGENCY TELE-HEALTH + NAVIGATION



- **> 24k patient encounters**
- **~ 92% avoid EMS transport**
- **Zero serious safety events**
- **Significant cost & efficiency savings**



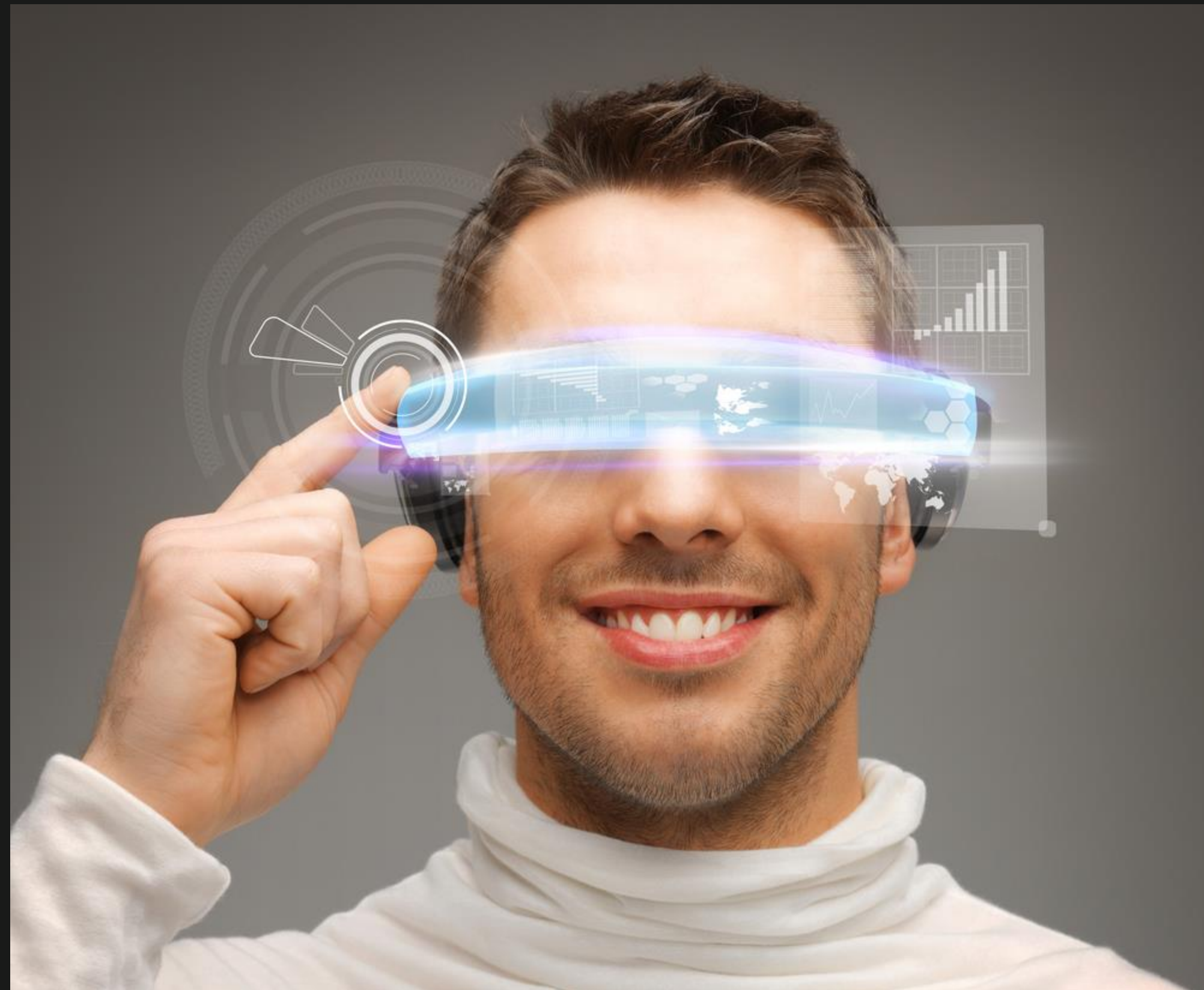
- **Sustainable Funding**



The Bottom Line

- **> 20k avoided ambulance trips**
- **44 minutes saved per encounter**
- **\$1,387/trip financial loss**
- **> \$27M in savings**

The Future



- Payor Collaboration



The Future:



Sample, Patient (03170684)

Clinic ER Edit pickup location

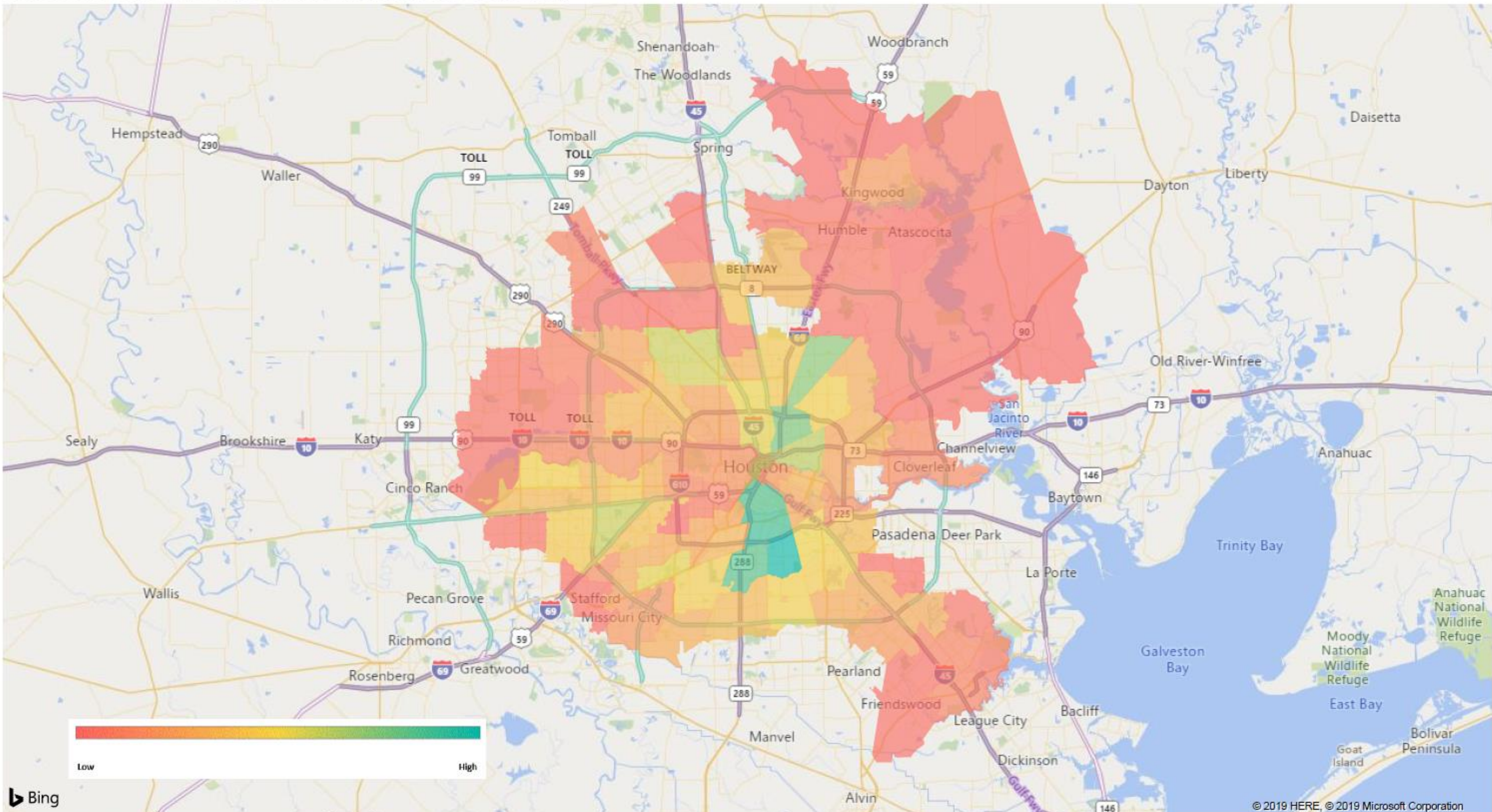
Ambulance

- Bayshore Medical Center**
4000 Spencer Highway
Pasadena, TX 77504
- CHI St. Luke's Health - Patients Medical Center**
4600 East Sam Houston Pkwy S
Pasadena, TX 77505
- CHI St. Luke's Health - Sugar Land Hospital**
11317 Lake Pointe Pkwy
Sugar Land, TX 77478
- CHI St. Luke's Health - The Vintage Hospital**
20171 Chasewood Park Drive
Houston, TX 77070



The Future: Synapse

Count of Scene Incident Postal Code (eScene.19) by Scene Incident Postal Code (eScene.19)





The Ask/Need:

- **The Houston Congressional Delegation support the current ETHAN model be included as part of the ET3 demonstration design.**
- **Support letter from the Congressional Delegation to CMMI to push consideration of wide spectrum of cost-saving measures, including what has been demonstrated to be effective in ETHAN to draw down federal funding.**
- **Help ensure success of ET3/CMMI by investing in a proven, cost saving program with operating budget of \$2.2 million**

ETHAN

EMERGENCY TELE-HEALTH + NAVIGATION

Questions?

Bill.Kelly@houstontx.gov