

Moody Park Connections

Design Concepts



PLANNING &
DEVELOPMENT
DEPARTMENT

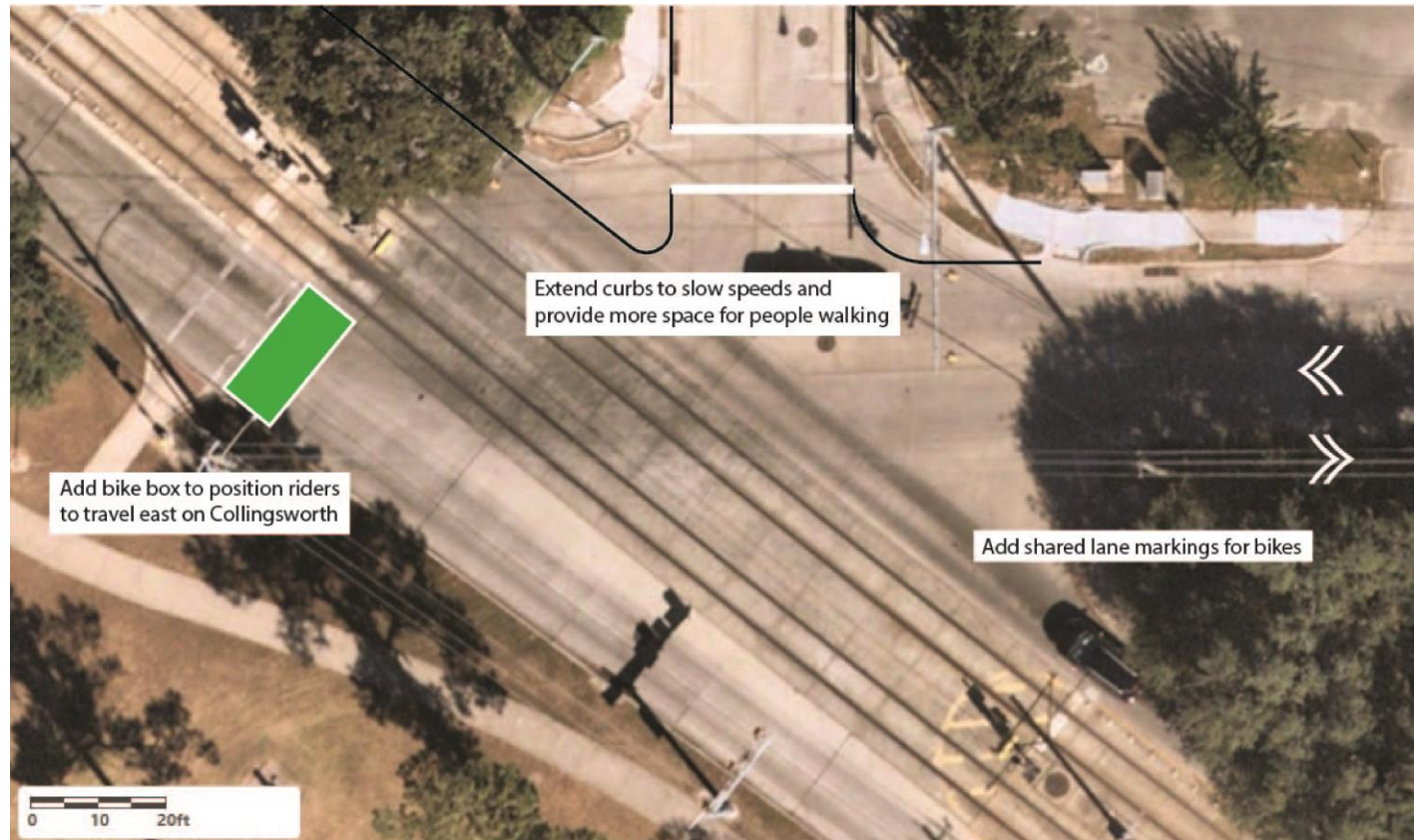


POTENTIAL MOODY PARK CONNECTIONS

- 1** COLLINGSWORTH BTWN FULTON AND IRVINGTON
- 2** FULTON SHARED PATH IMPROVEMENTS
- 3** FULTON BIKEWAY EXTENSION TO QUITMAN
- 4** COTTAGE STREET SHARED BIKEWAY TO HEIGHTS

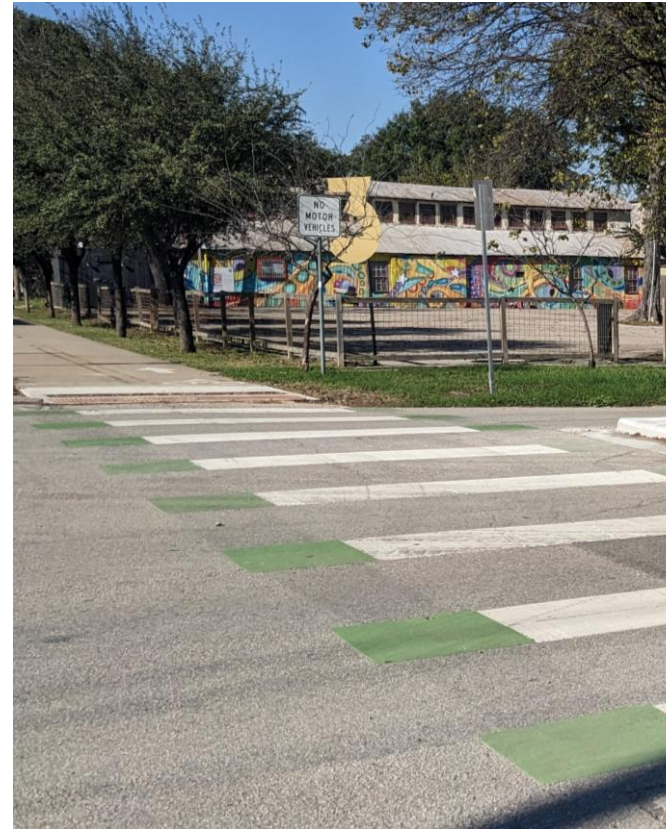
1: Collingsworth between Fulton and Irvington

Provide more space and better wayfinding for people walking and biking.



2: Fulton Shared Path Improvements

Define separate space for pedestrians and cyclists on existing shared path.



3: Fulton Bikeway Extension to Quitman

Install protected bike lane on Fulton (replacing underutilized parking), connecting existing Fulton shared path to future Quitman bikeway.



4: Cottage Street Shared Bikeway

Install signage and pavement markings to provide shared-lane connection between Heights and Near Northside.



Thank You



PLANNING &
DEVELOPMENT
DEPARTMENT

832-393-6600 | www.houston.tx.gov/planning