



**Abbie Kamin**  
Council Member, District C



# TREE CARE & SUSTAINABILITY

DISTRICT C MEETINGS





# Wind Tolerant Advice

# Who We Are

Founded in 1983, Trees For Houston initially focused its early efforts on planting street trees in the heart of Houston. Now, with over half a million trees planted, the nonprofit organization has evolved into one that grows, plants, distributes, and maintains thousands of trees across the greater Houston region.

Within the next ten years, Trees For Houston plans to plant one million trees throughout our region.





# Trees For Houston Staff

## **OPERATIONS**

Barry Ward, Executive Director

Susy Perez, Operations and Finance Director

Valkyrie Mata, Office and Operations Coordinator

## **DEVELOPMENT**

Randi Koenig, Director of Major Gifts

Abby Clark, Director of Special Events and Stewardship

Martha Chavez, Director of Individual Giving and Marketing

## **PLANTING/FORESTRY**

Natalie Roberts, Projects Director

Sarah Trippel, Projects and Volunteer Manager

Bailey Rohde, Volunteer, Outreach & Education Coordinator

# Where to Plant

When planting new trees, carefully assess the location with future growth in mind.

- Is there sufficient space for a healthy root ball?
- Are there overhead power lines or other structures that might be in conflict with the tree when it matures?

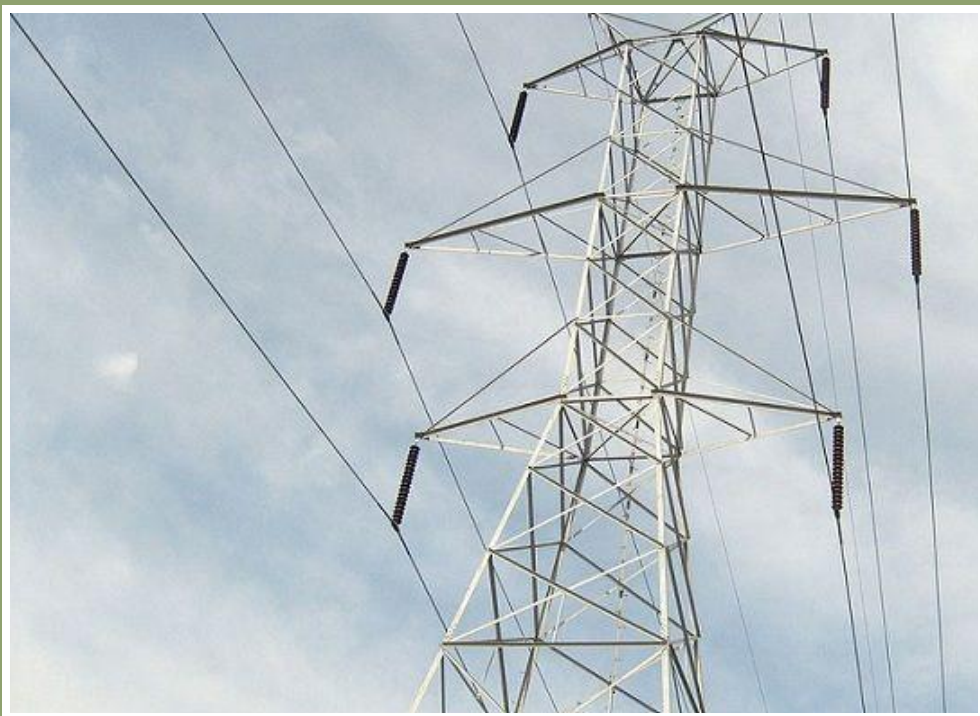
Planting the right tree in the right place is crucial for the long-term health of the tree and for minimizing the risk to infrastructure.

# Safe Planting Tips

**Transmission lines** – no trees inside the Right-of-Way and no tall trees nearby.

**Service drops** – never have trees planted beneath them.

**Distribution lines** – need 10 feet of clearance from vegetation.



# Safe Planting Tips

Homeowners must call **811** before digging to avoid hitting underground utility lines.

You can find info referring to different species' planting distance (i.e. how to know what distance to plant an oak tree compared to a persimmon tree) using the **Texas Forest Service Tree Planting Guide:**

[texastreeplanting.tamu.edu](http://texastreeplanting.tamu.edu)

# Care

## **Schedule annual light pruning on your trees.**

This will help to keep your trees structurally sound and minimize the risk of falling debris from dead or weakened branches.

## **Always use a certified arborist when having your trees assessed or maintained.**

Tree care is a specialized field with specific knowledge and expertise requirements. Your tree care professional should be an *ISA certified arborist*.



# Watering FAQ

## **Best time of day to water?**

- Generally not important, although there will be a slight reduction in evaporative loss if you water at night.

## **How frequently?**

- With native species, watering is generally needed only during long drought periods or lengthy high-heat events. Watering thoroughly once a week is generally adequate during these periods.

## **Can more watering lead to trees being more dependent and less self-sustaining in the natural environment?**

- It is possible, but of far greater significance is planting a hardy native species.

# Maintenance

## **Signs of an unhealthy tree?**

- Yellowing or outright loss of leaves; fungal growth on otherwise healthy wood
- Some sick trees may have no obvious signs of stress– always consult an ISA certified arborist for tree care.

## **How to care for trees that are experiencing increased saturation from rain events?**

- Keeping a tree properly pruned and cared for prior to wind and rain events is the key to survival.



# Sturdy Large Trees

- Live Oak
- Bald Cypress
- Eastern Red Cedar
- Monterrey Oak/Mexican White Oak

# Sturdy Medium Trees

- American Persimmon (pictured)
- Southern Magnolia
- American Holly
- Cedar Elm
- San Carlos Red Oak





# Sturdy Small Trees

- Mexican Persimmon
- Mexican Plum
- Wax Myrtle (pictured)



# For More Info...

[www.treesforhouston.org](http://www.treesforhouston.org)

[www.texasreeplanting.tamu.edu](http://www.texasreeplanting.tamu.edu)

Find an arborist:

[www.treesaregood.org/findanarborist](http://www.treesaregood.org/findanarborist)

[www.isatexas.com](http://www.isatexas.com)

