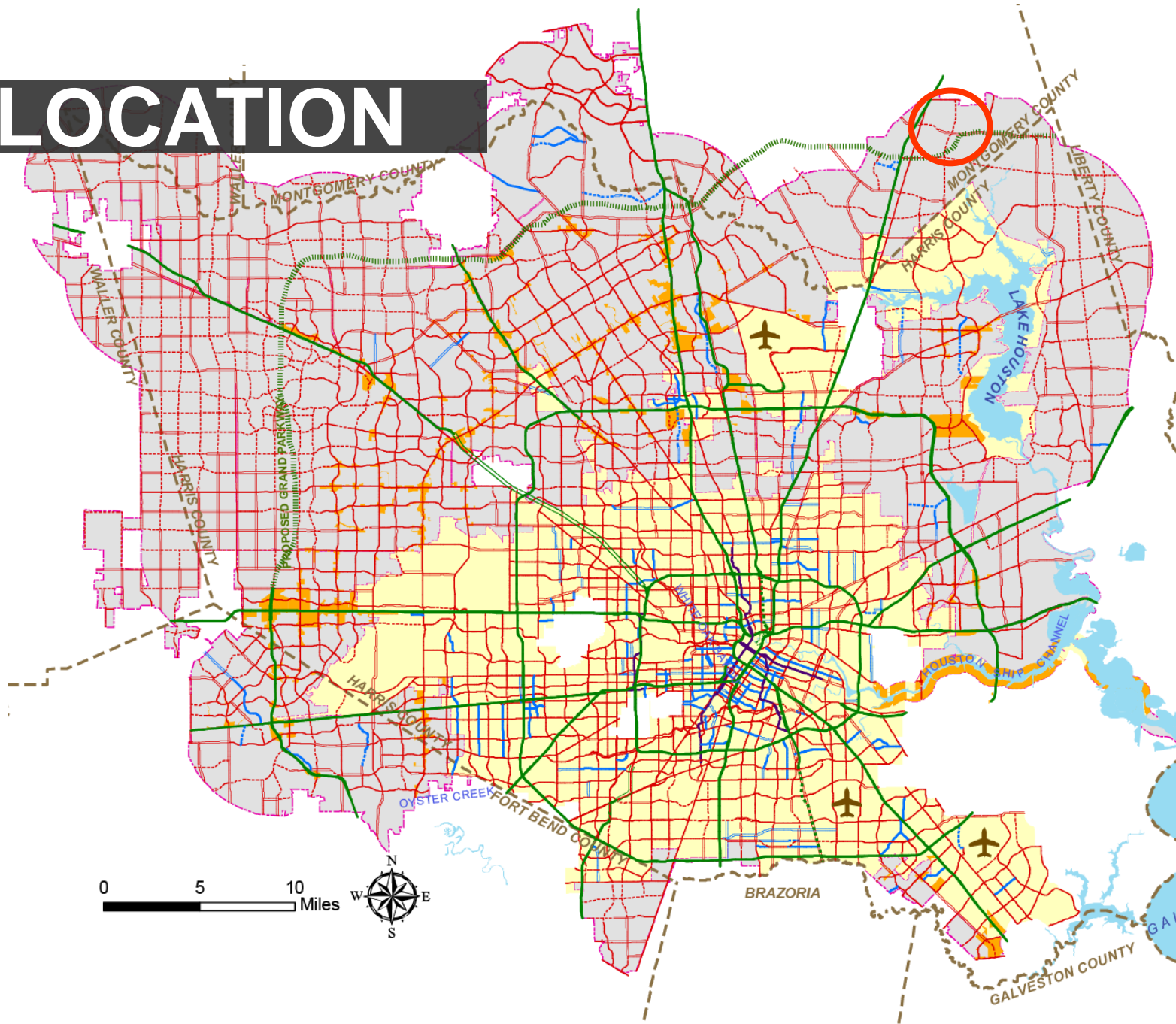


 **2013 Major Thoroughfare & Freeway Plan Amendment Request**

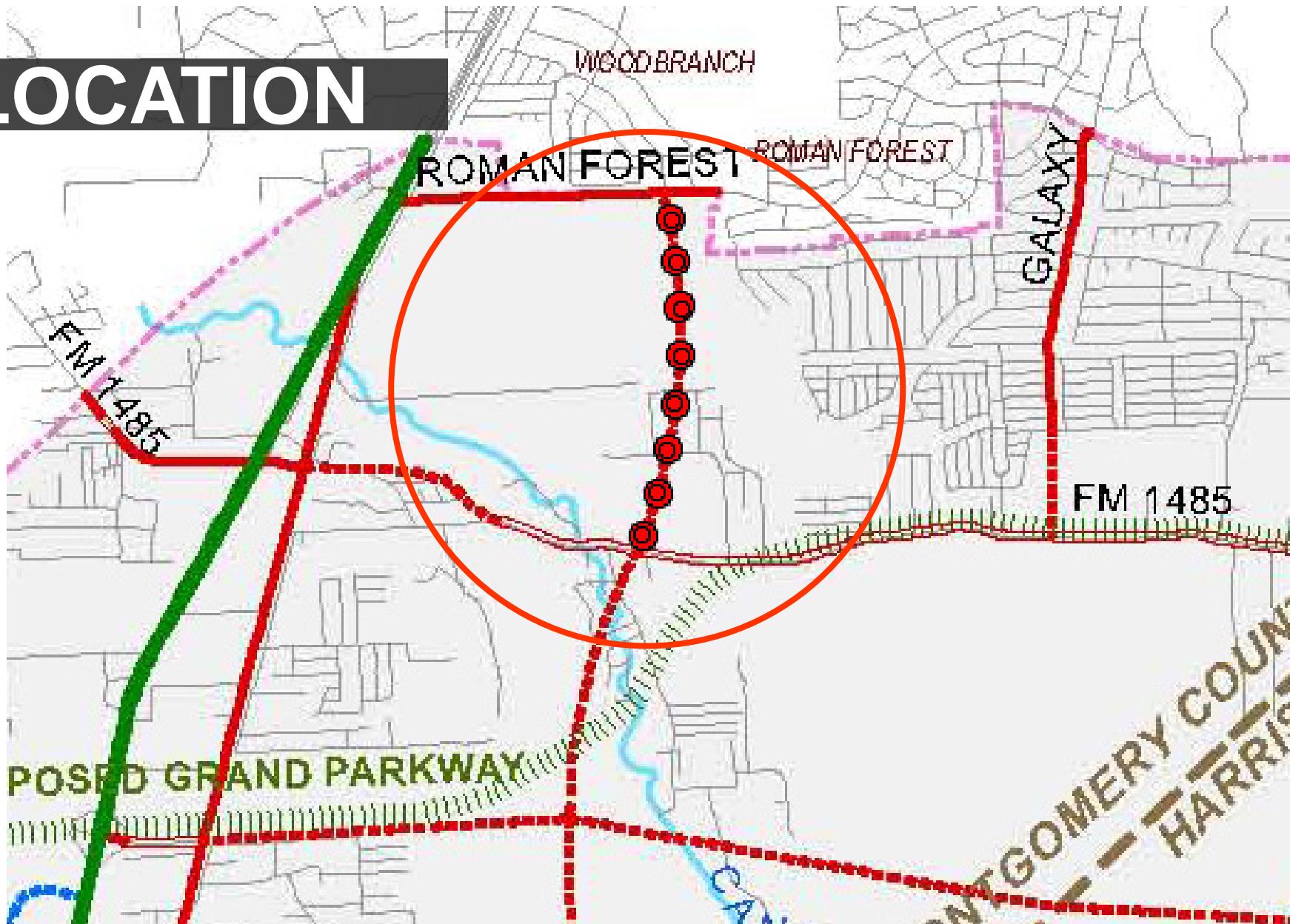
W. Lake Houston Pkwy.

TBG Partners

LOCATION

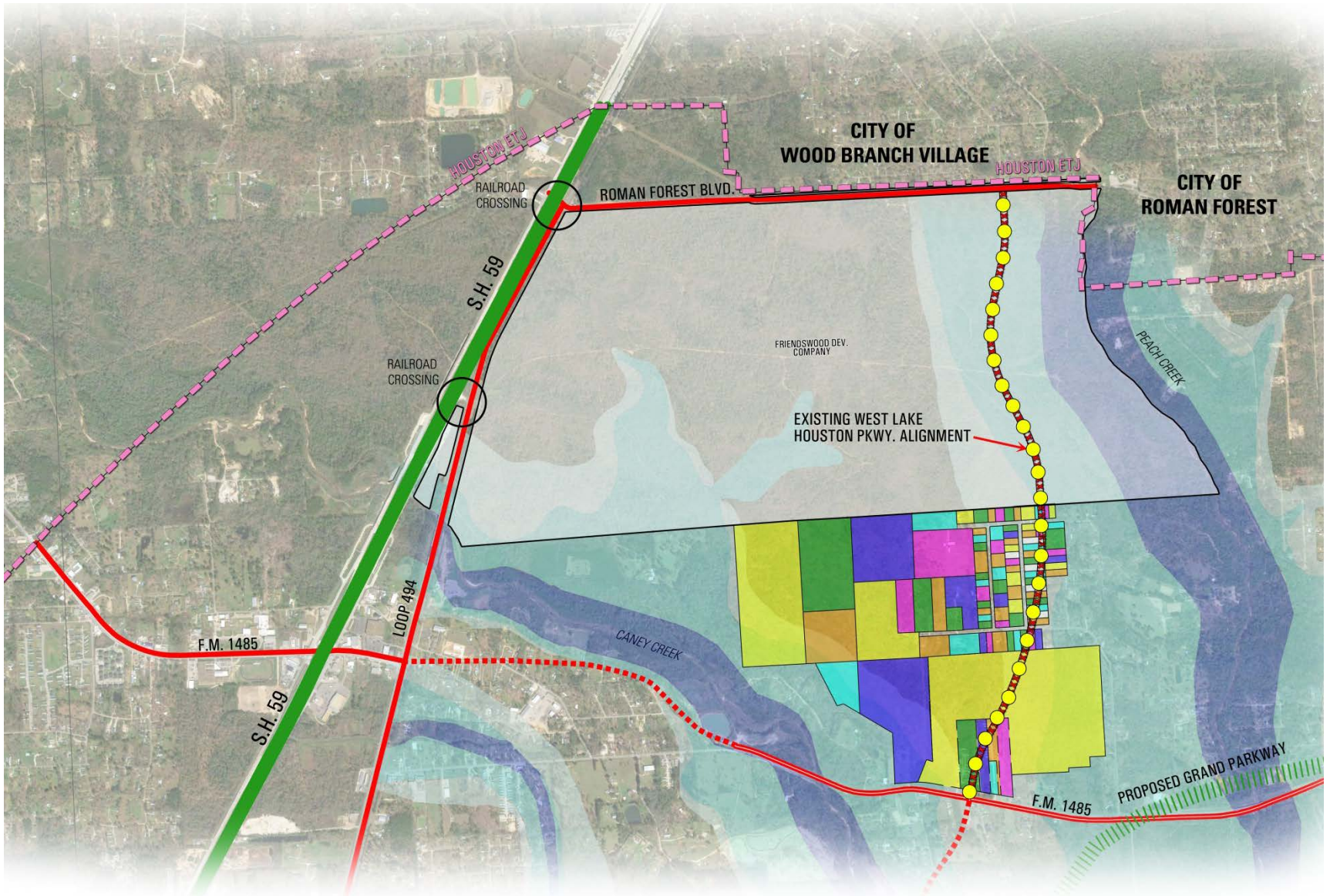


LOCATION



REQUEST

Remove West Lake Houston Pkwy. between Roman Forest and F.M. 1485



JUSTIFICATION

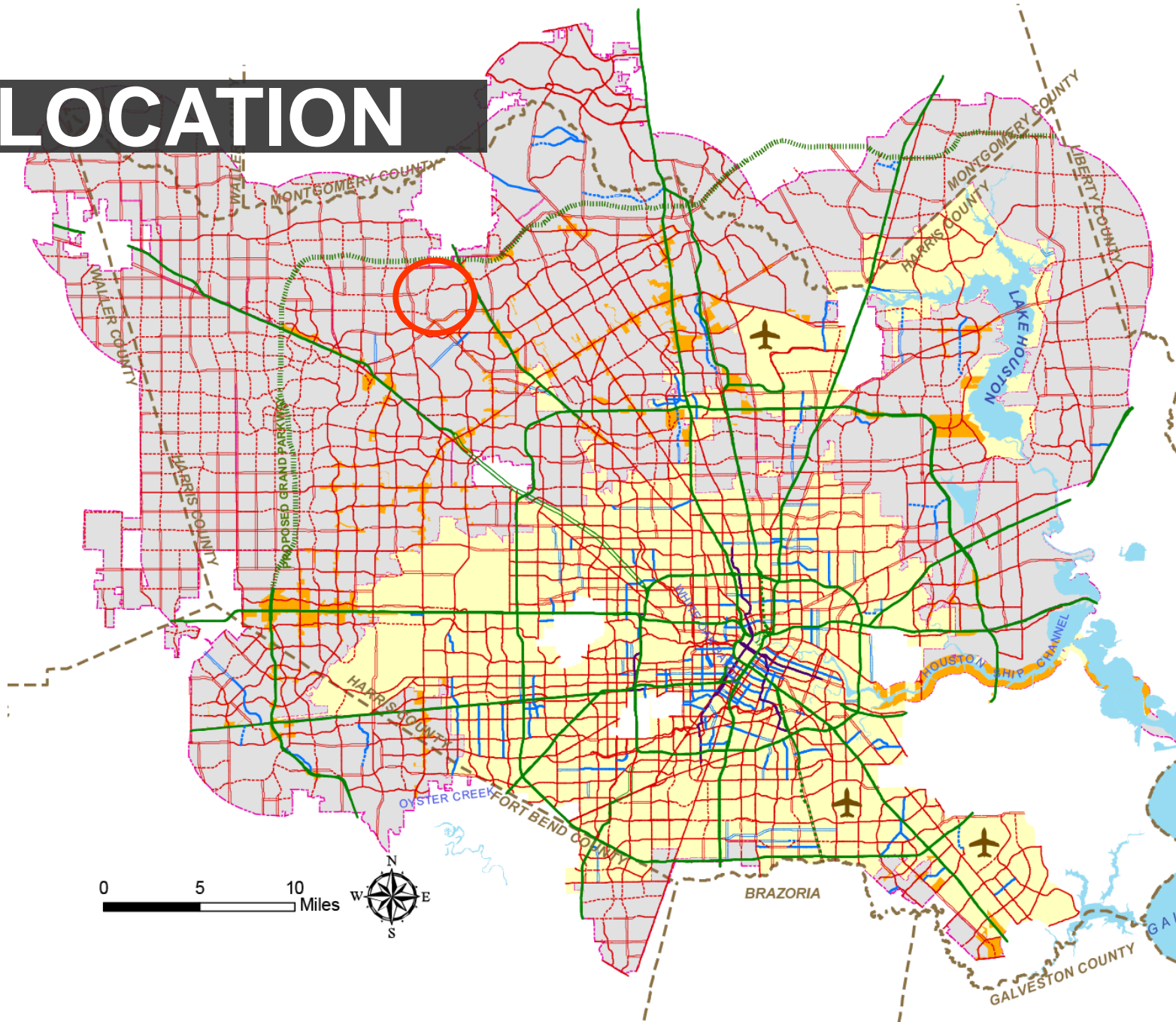
- Limited traffic – Low density single-family subdivision
- Future east-west collector will serve residential development and connect to existing railroad crossing
- Proposed alignment is within flood plains of Caney Creek and Peach Creek
- Acquisition of future right of way is improbable because the area is fragmented by large-lot subdivisions.
- Furthest extend of ETJ
 - Impact to cities of Roman Forest and Wood branch Village

 **2013 Major Thoroughfare & Freeway Plan Amendment Request**

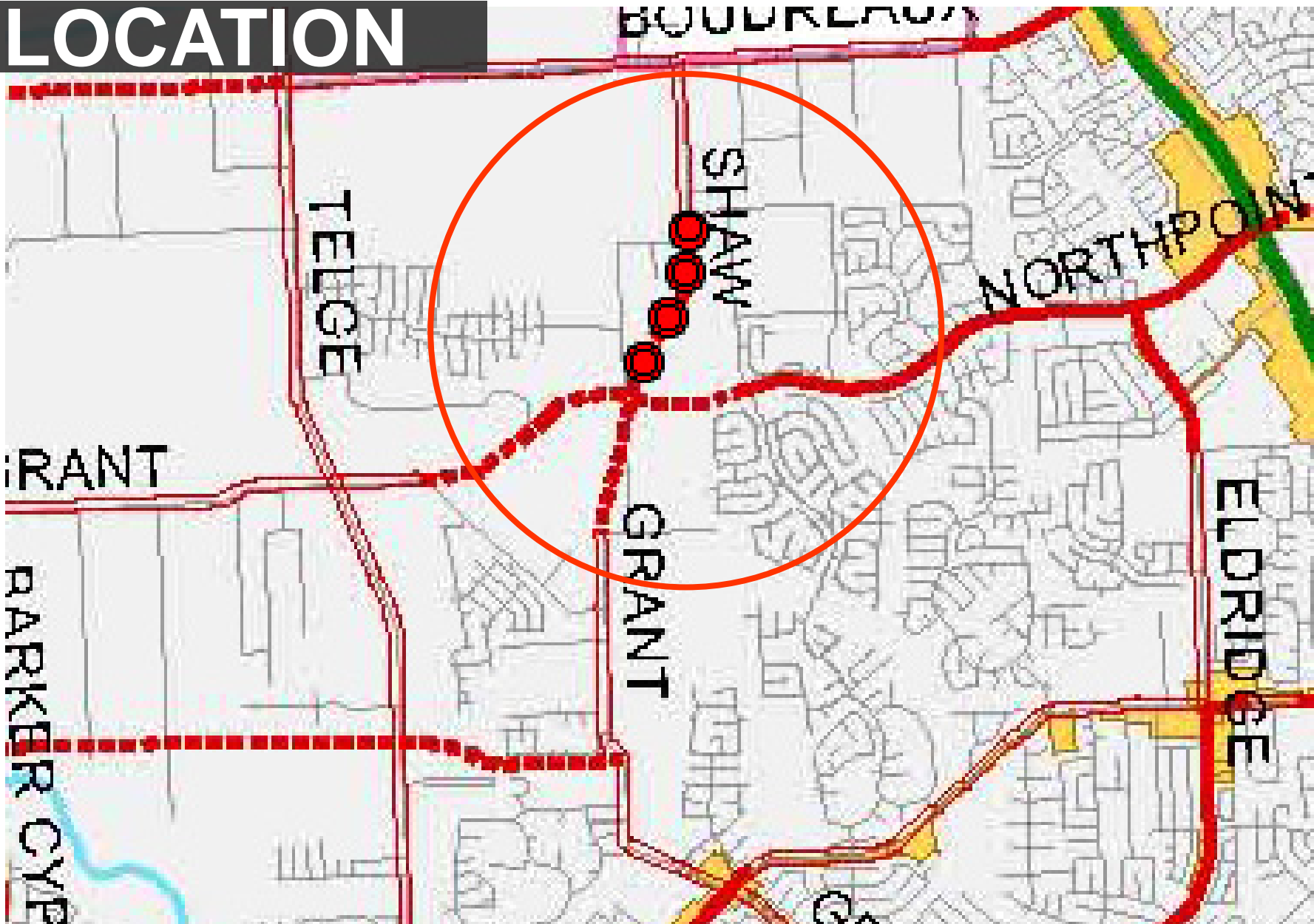
Shaw Road

TBG Partners

LOCATION

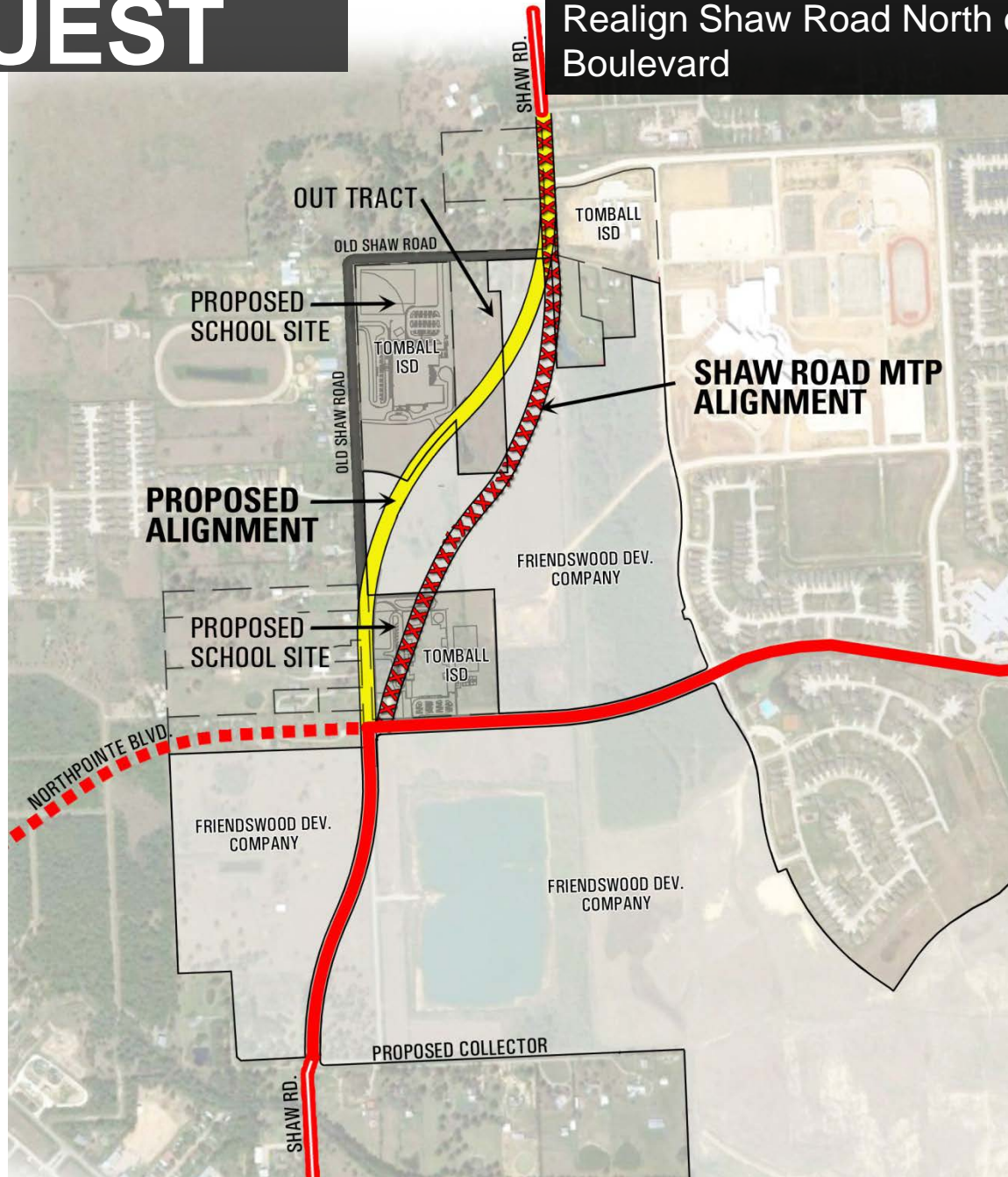


LOCATION



REQUEST

Realign Shaw Road North of Northpointe Boulevard



JUSTIFICATION

- Better Intersection Design
 - Longer Tangent Length
 - Accommodates a left turn lane
 - Improved visibility at intersection

- Avoid going through elementary school site

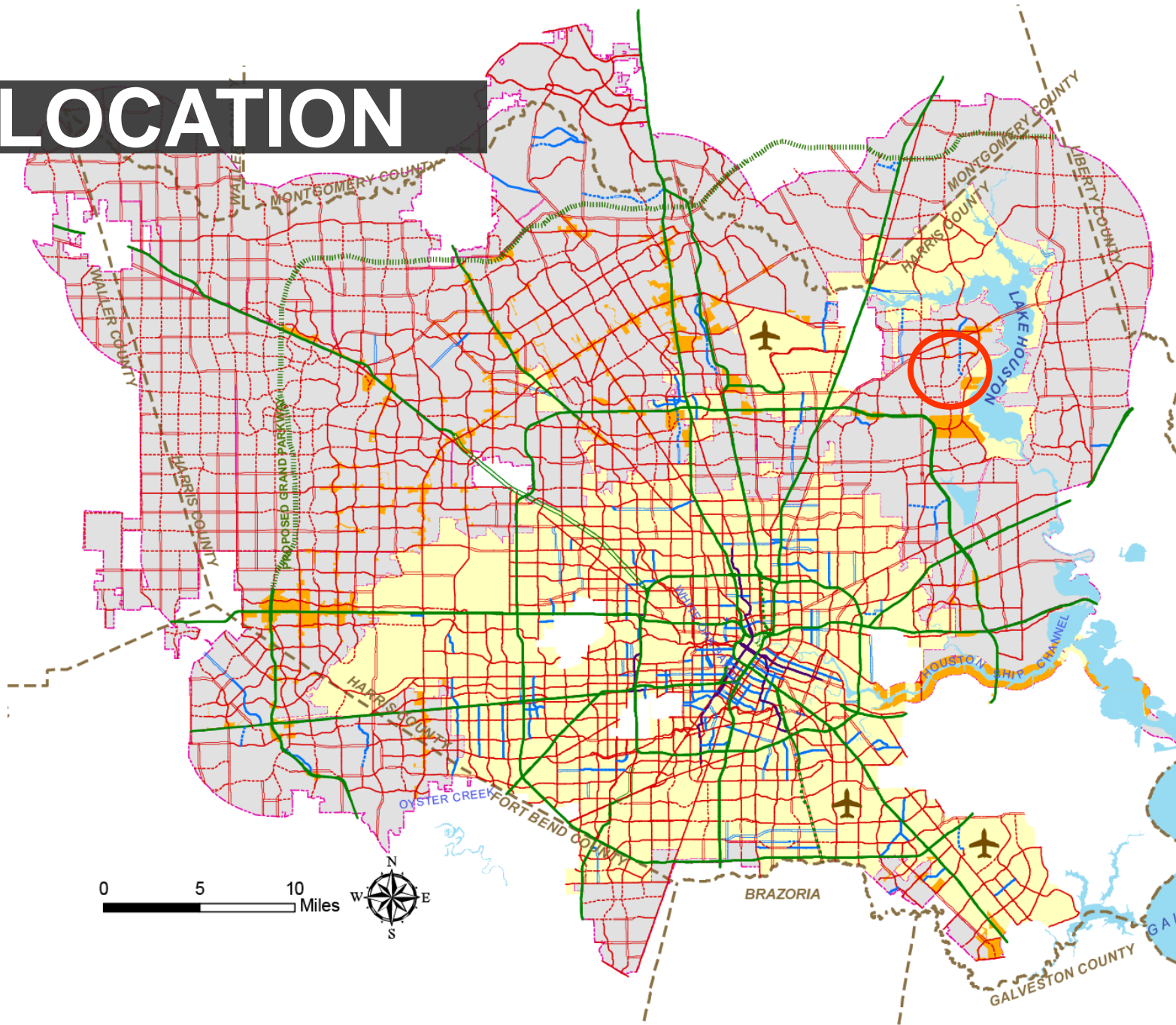
- Connects old Shaw Road to new Shaw Road

 **2013 Major Thoroughfare & Freeway Plan Amendment Request**

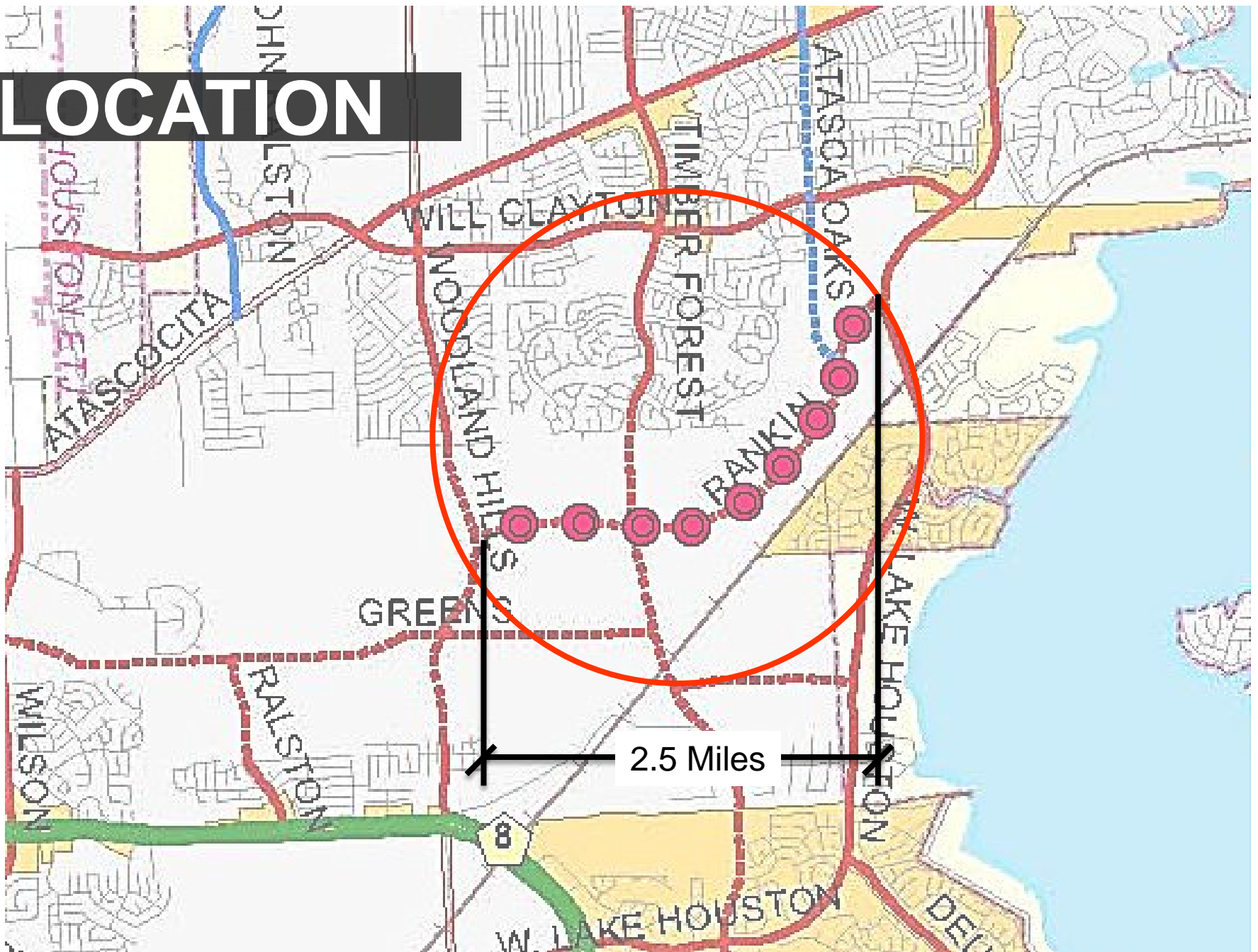
Rankin Road

TBG Partners

LOCATION

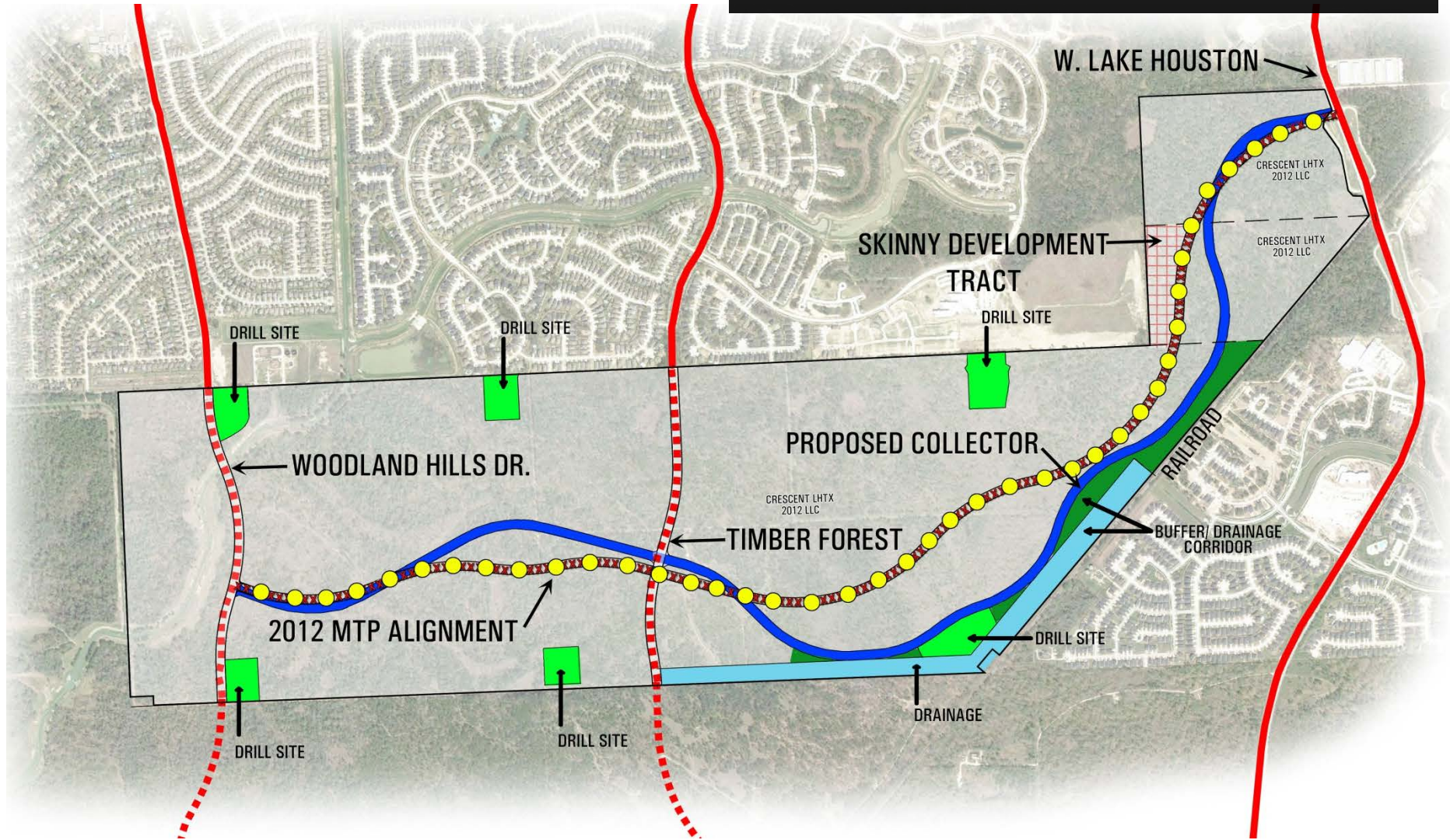


LOCATION



REQUEST

Reclassify Rankin Road between West Lake Houston and Woodland Hills from a designated Major Thoroughfare to a Collector Street.



JUSTIFICATION

- Previous changes make this function as a collector street
 - Total length is only 2.5 miles
 - Limited traffic- low density single-family subdivision
- A collector would allow more reasonable residential development
 - Allow for reduced design speeds
- A collector would allow the road to be more appropriately located
 - Utilize entire area of property
 - Create a buffer/parkway adjacent to railroad
- Will maintain similar traffic capacity with 4 moving lanes and a minimum 80' R.O.W.