



Water Line Replacement in Tall Timbers Area

WBS No. S-000035-0183-4

Hien Pham, *P.E.*
Managing Engineer
Construction Branch



AGENDA

1 OVERVIEW OF THE PROJECT

2 PROJECT SCOPE

3 CONTACT INFORMATION

4 FAQs



OVERVIEW OF THE PROJECT



Project Limits: Buffalo Bayou on the north, San Felipe Street on the south, Larchmont on the east, and West Lane/Inverness Drive on the west

Streets include: Inverness Drive, Del Monte Drive, West Lane, Olympia Drive, Chevy Chase, Inwood Drive, Timber Lane, Knollwood Drive, Willowick Road, Pine Hill Lane

- **Anticipated Start Construction = Summer 2017**
- **Anticipated Completion Date = Summer 2018**
- **Construction Cost = \$2.7 million**



PROJECT SCOPE

The project includes:

- Construction of 8-inch water lines, 6-inch water lines and 10-inch sanitary sewer lines. Construction of service lines, fire hydrants, valves, fittings, connections, appurtenances, and asphalt replacement. The work also includes site and pavement restoration, tree protection, storm water pollution prevention, and traffic control in relation to the construction of the water lines and sanitary sewer lines.

TALL TIMBERS

Main Replacement Water Lines

STREET	ADDRESS	START STREET	END STREET
Knollwood	3600-3799	Willowick (East)	Willowick (West)
Inverness	3600-3999	Del Monte	Willowick
Inverness Cul-de-Sac	4000-4099	END (North)	Inverness
Inwood	3600-3999	Willowick	Larchmont
Del Monte	3600-3999	West	Larchmont
Del Monte Cir	3735-3827	Del Monte	Del Monte
Chevy Chase	3600-3899	Willowick	Larchmont
West Ln		Del Monte	Willowick
Olympia	3600-3999	West/Willowick	Chevy Chase
Pinehill		END (North)	Willowick
Willowick	3610-4099	San Felipe	Inwood
Timber Ln		Knollwood	San Felipe

Main Replacement Sanitary Sewer Lines

STREET	ADDRESS	START STREET	END STREET
Pinehill	1-2	END (North)	Willowick
	2-15	END (North)	Willowick



PROJECT PERSONNEL

- ***Contractor***

- Resicom Inc.

- ***City of Houston Staff***

- **Hien Pham** (Managing Engineer)

- **Stephen Wright**(Project Manager)

- **Evelyn Kuykendall** (Senior Inspector)

- **Julian Boddy** (Inspector)



FAQs

MY PROJECT INFORMATION

- ***Keep your door hanger throughout the project***
 - Lists phone numbers you need
 - Lists the “WBS” Project Number
 - WBS Number needed when you call or write us
- ***Meet your Job Superintendent or Inspector***
 - Will be your contact to resolve issues throughout construction
- ***Construction will occur in City right-of-way***
 - City right-of-way generally extends 10 to 15 feet into your yard



FAQs

HOW TO REPORT A PROBLEM



3-1-1

- Report the WBS Number
- Request issue be directed to PWE Engineering and Construction Division
- Be as complete as possible with your concern



pwecip@houstontx.gov



FAQs

BEFORE CONSTRUCTION

–How to Prepare

- Document the conditions of your yard and sprinkler head locations; the contractor will too
- Remove special landscaping features (i.e., fountains, lawn art)
- Plan for water service interruption
- Be mindful of protective barriers
- Understand the scope of the work



FAQs

DURING CONSTRUCTION

-What to Expect

- Potential water service impacts



FAQs

DURING CONSTRUCTION

-Water Service

Potential for service interruption:

- Waterline replacement - notification 24 to 48 hours in advance
 - Periodic
 - May last 2 to 4 hours
- Accidental – contractor will work quickly to restore



FAQs

DURING CONSTRUCTION

-Driveway Access

- Access to driveways are maintained throughout duration of the project.

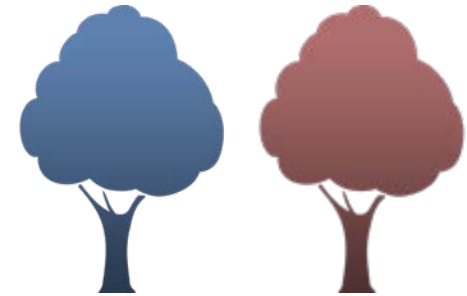


FAQs

DURING CONSTRUCTION

-Trees

- Goal is to protect all trees
 - Work with City Arborist
 - Plans do not call for any tree removal
- Report damage to 3-1-1 or Job Inspector



FAQs

RESTORATION

- Restoration of sprinkler systems, grass, etc. when construction is complete
 - City does not approve final payment to contractor until restoration is complete
- If concerns:
 - Document (writing, photo, etc)
 - Call 3-1-1
 - Do not make the repairs yourself



FAQs

COH PWE website

- www.publicworks.houstontx.gov/home

For a complete listing of Frequently Asked Questions please visit:

- www.publicworks.houstontx.gov/e cd/ faqs.html

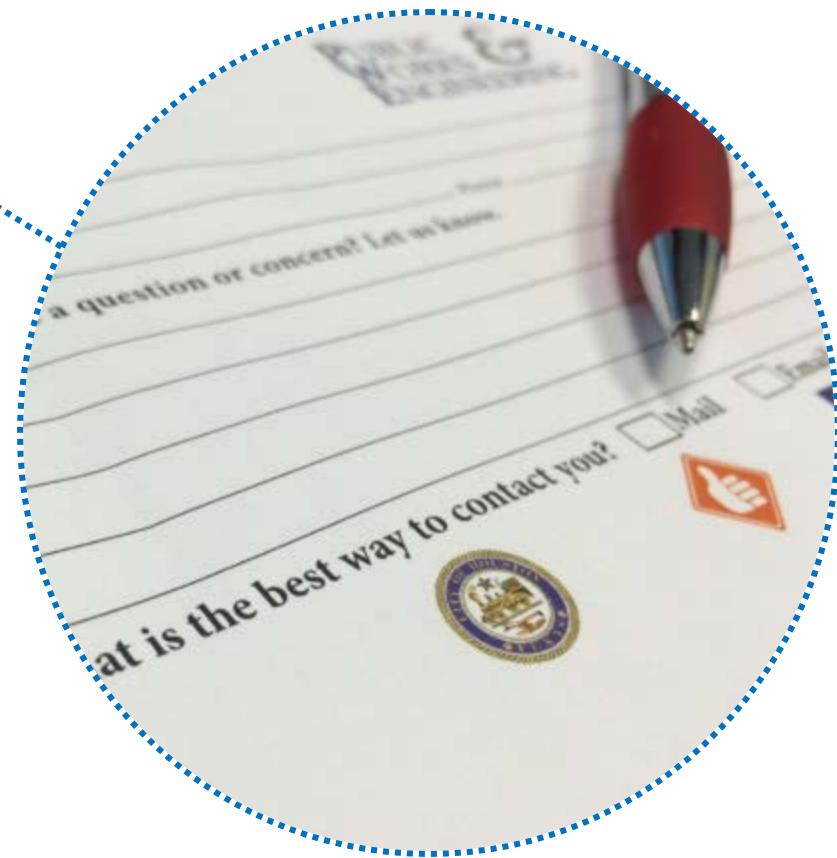


We Want Your Input

Fill out a comment/request card tonight

Or email us at:
pweCIP@houstontx.gov
www.pwecip.houstontx.gov

YOUR INPUT IS
WELCOMED





THANK YOU

Please find the nearest breakout group and remember to submit your comment cards at the Public Works & Engineering table.

